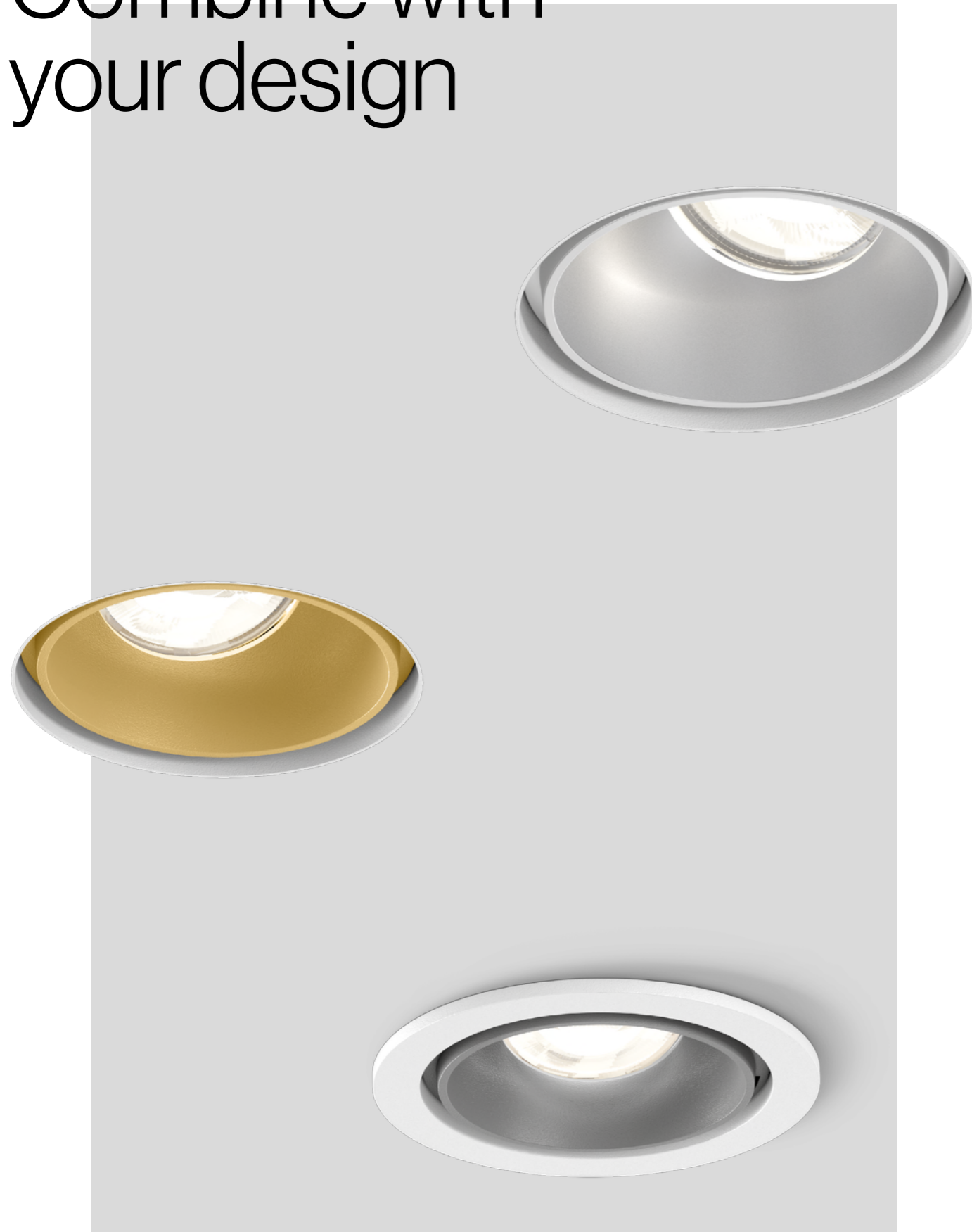


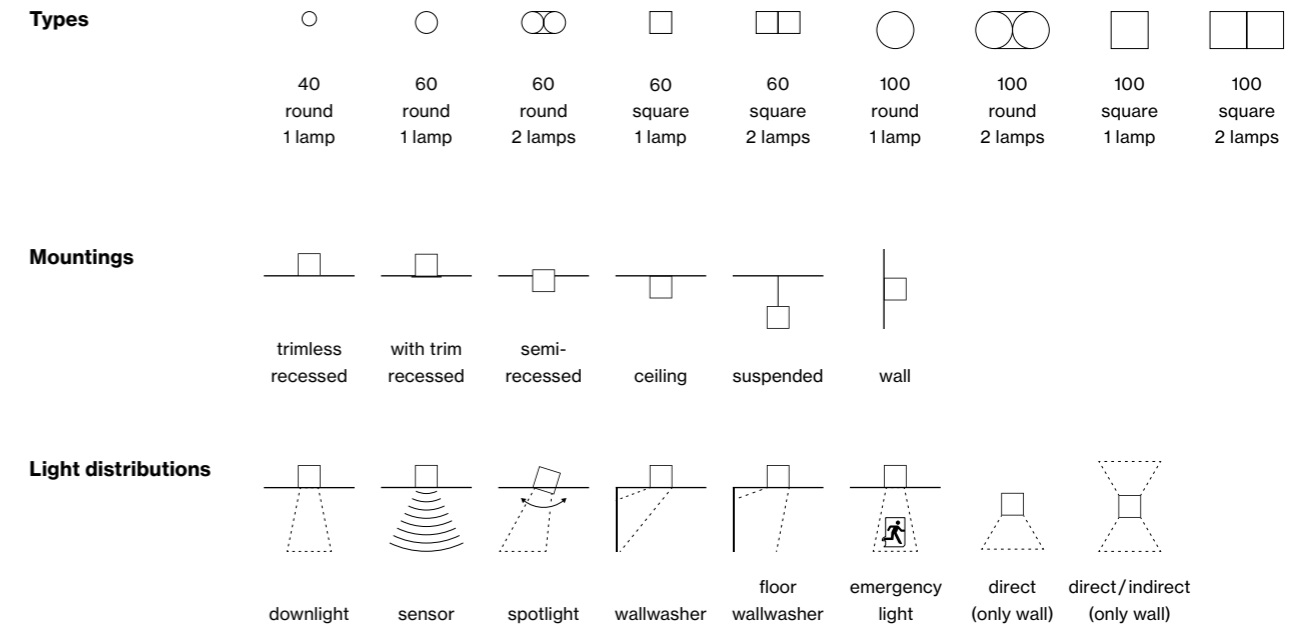
# Combine with your design



## SASSO

**EN** SASSO is a glamorous lighting solution for extravagant interior concepts regardless of how it is used. The versatile spotlight series is available as a recessed, semi-recessed, ceiling- or wall-mounted, or suspended version. Choose between round or square versions, as well as single or double-lamp spotlights in some versions. To ensure the spot fits harmoniously into the overall design, it is available in many colours. The housing colours white, black, and silver can be optimally combined with a selection of differently coloured insets. SASSO is available with different light distribution characteristics – either as spotlight, downlight, wallwasher, or wallwasher floor. In addition, sensors or emergency insets are optionally available. The series is characterised by an excellent colour rendering up to  $CRI \geq 95$  (2-SDCM) in all light colours: 2700K, 3000K, 4000K, or Colour Warm Dimming.

**DE** Wie sie auch zum Einsatz kommt, SASSO ist eine glamouröse Lichtlösung für extravagante Interior-Konzepte. Die vielfältige Strahlerserie ist in zahlreichen Varianten verfügbar: als Einbau-, Halbeinbau, Decken- oder Wandbauvariante sowie in abgependelter Ausführung. Außerdem haben Sie die Wahl zwischen runden oder quadratischen Varianten, sowie in manchen Ausführungen auch als ein- oder zweiflämmige Strahler. Um den Strahler harmonisch in die Gesamtgestaltung einzufügen, ist er in vielen Farben erhältlich – wobei die Housing Farben Weiß, Schwarz und Silber optimal mit einer Auswahl an verschiedenfarbigen Insets kombinierbar sind. SASSO ist in verschiedene Abstrahlcharakteristiken verfügbar – wahlweise als Spotlight, Downlight, Wallwasher oder Wallwasher Floor. Zusätzlich sind wahlweise Sensoren oder Emergency Insets erhältlich. In allen Lichtfarben – 2700K, 3000K, 4000K oder Colour Warm Dimming – zeichnet sich die Serie zudem durch eine sehr gute Farbwiedergabe von bis zu  $CRI \geq 95$  (2-SDCM) aus.



# SASSO recessed

## Light engines

**SASSO 40**  
round  
adjustable/  
downlight



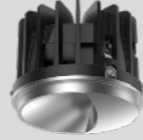
**SASSO 40**  
round  
wallwasher /  
wallwasher floor



**SASSO 60**  
round  
adjustable/  
downlight



**SASSO 60**  
round  
wallwasher /  
wallwasher floor



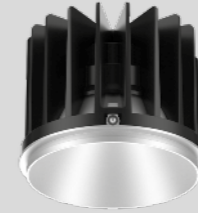
**SASSO 60**  
square  
downlight



**SASSO 60**  
square  
wallwasher /  
wallwasher floor



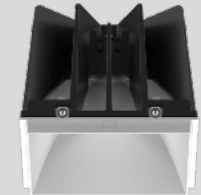
**SASSO 100**  
round  
adjustable/  
downlight



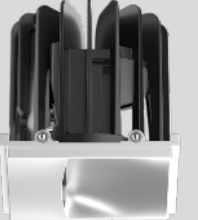
**SASSO 100**  
round  
wallwasher /  
wallwasher floor



**SASSO 100**  
square  
adjustable/  
downlight



**SASSO 100**  
square  
wallwasher /  
wallwasher floor



**INSET POWER**  
**LUMINOUS EFFICACY**  
**LUMINOUS FLUX**  
**COLOUR TEMPERATURE**  
**BEAM ANGLE**  
**IP RATING**

7.4W  
up to 84lm/W  
up to 624lm  
2700, 3000, 4000K  
14°, 27°, 45°  
‡ IP40 / † IP20 (adj.)  
‡ IP44 / † IP20 (dl.)  
matt silver, white,  
black, gold

6.8W  
up to 97lm/W  
up to 659lm  
2700, 3000, 4000K  
asymmetric  
IP20  
matt silver, white,  
black, gold

10.7W  
up to 107lm/W  
up to 1150lm  
2700,3000,4000K,CWD  
15°, 21°, 42°  
‡ IP40 / † IP20 (adj.)  
‡ IP44 / † IP20 (dl.)  
matt silver, white,  
black, gold

8.2W  
up to 89lm/W  
up to 726lm  
2700, 3000, 4000K  
asymmetric  
IP20  
matt silver, white,  
black, gold

10.7W  
up to 110lm/W  
up to 1180lm  
2700,3000,4000K,CWD  
15°, 21°, 42°  
‡ IP44 / † IP20  
matt silver, white,  
black, gold

8.2W  
up to 89lm/W  
up to 726lm  
2700, 3000, 4000K  
asymmetric  
IP20  
matt silver, white,  
black, gold

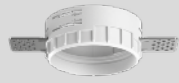
17.2W, 25W  
up to 116lm/W  
up to 2630lm  
2700, 3000, 4000K  
19°, 34°, 45°, 65°  
‡ IP40 / † IP20 (adj.)  
‡ IP44 / † IP20 (dl.)  
matt silver, white,  
black, gold

25W, 23.4W  
up to 120lm/W  
up to 2810lm  
2700, 3000, 4000K  
asymmetric  
IP20  
matt silver, white,  
black, gold

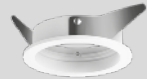
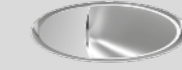
17.2W, 25W  
up to 116lm/W  
up to 2640lm  
2700, 3000, 4000K  
19°, 34°, 45°, 65°  
‡ IP40 / † IP20 (adj.)  
‡ IP44 / † IP20 (dl.)  
matt silver, white,  
black, gold

25W, 23.4W  
up to 120lm/W  
up to 2810lm  
2700, 3000, 4000K  
asymmetric  
IP20  
matt silver, white,  
black, gold

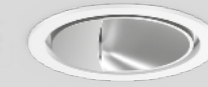
## Mounting accessories



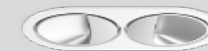
**round trimless**  
for plasterboard ceilings 12.5/15/25 mm



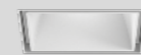
**round with trim | 1 lamp**  
for intermediate ceilings 2-25 mm



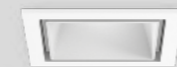
**round with trim | 2 lamps**  
for intermediate ceilings 2-25 mm



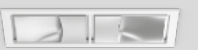
**square trimless**  
for plasterboard ceilings 12.5/15/25 mm

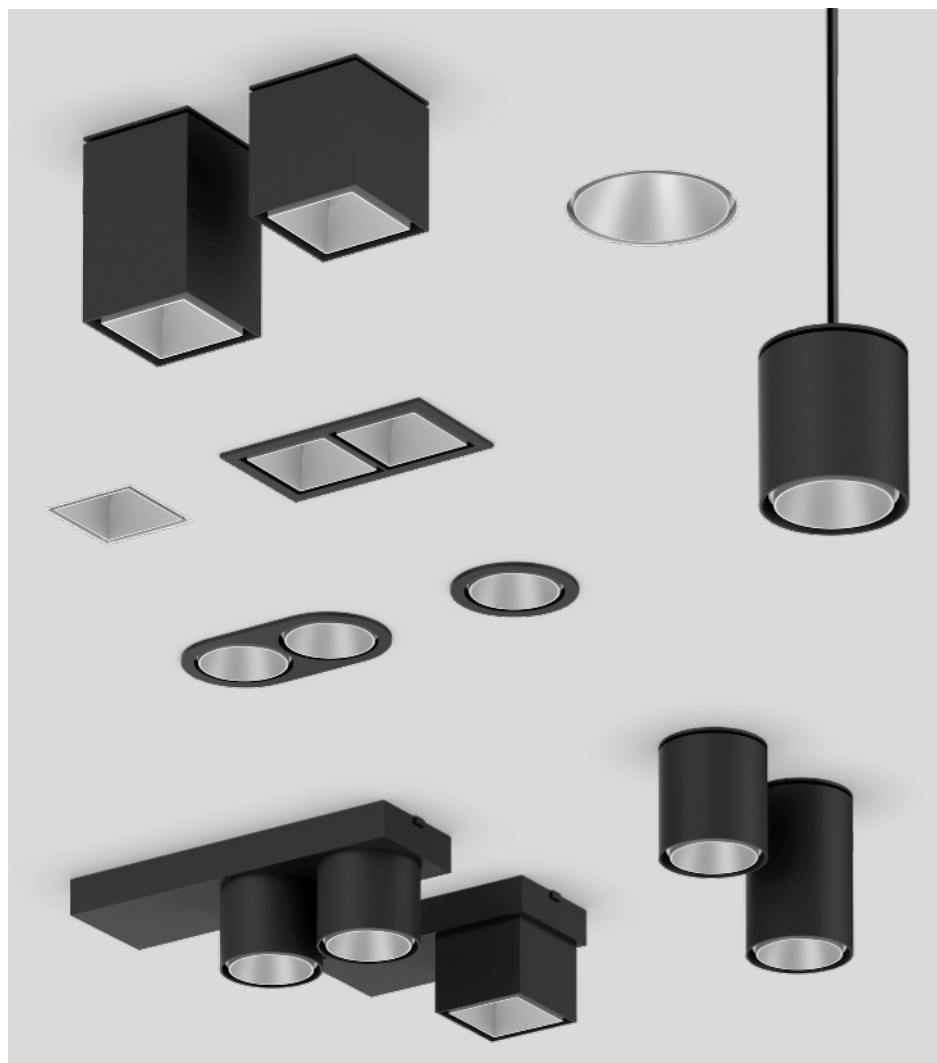


**square with trim | 1 lamp**  
for intermediate ceilings 2-25 mm



**square with trim | 2 lamps**  
for intermediate ceilings 2-25 mm





## Variety

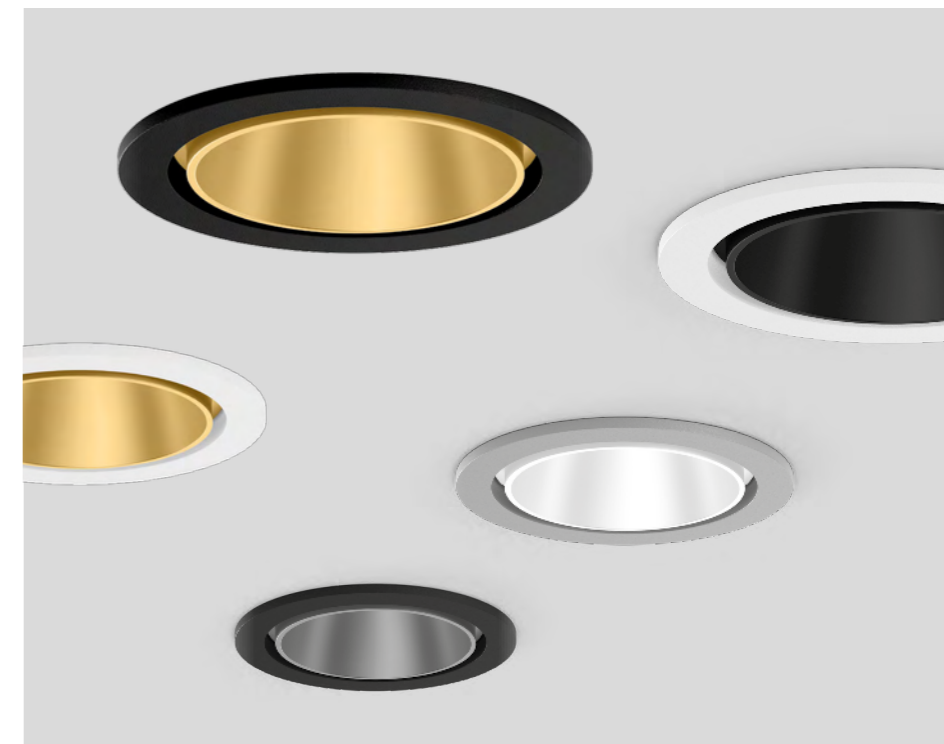
EN SASSO can be integrated into any lighting design concept. The spotlights are available as recessed, semi-recessed, wall and ceiling mounted variants, as single or dual-lamp spotlights in an elegant base, or as suspended versions. Depending on the interior design, choose between round or square luminaires and the recessed set with or without trim.

DE SASSO integriert sich in jedes lichtplanerische Konzept. Die Strahler sind als Einbau-, Halbeinbau- und Wand- sowie Deckenanbauvariante als ein- oder zweiflammiger Strahler in einem eleganten Gehäuse, oder als abgependelte Variante verfügbar. Je nach Raumgestaltung haben Sie die Wahl zwischen runden oder quadratischen Leuchten sowie dem Einbauset mit oder ohne Rand.

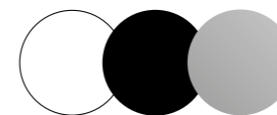
## Colour variety

EN SASSO is available in many different colour variations to complement custom designs and colour concepts. The select housing colours (white, black, and silver) combine beautifully with silver, white, black, or gold insets, delivering a harmonious, high-quality overall design.

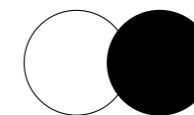
DE Um sich individuellen Entwürfen und Farbvorstellungen anzupassen, ist SASSO in vielen verschiedenen Farbvarianten erhältlich. Die speziellen Gehäusefarben (Weiß, Schwarz und Silber) lassen sich sehr gut mit Insets in Silber, Weiß, Schwarz oder Gold kombinieren: mit dem Ergebnis eines harmonischen, hochwertigen Gesamtbildes.



### Housing colours



SASSO 60/100 recessed



SASSO 40 recessed  
SASSO 60/100 semi-recessed/  
ceiling / suspended / wall

### Inset colours



## Precise light adjustment

EN A patented swivel mechanism offers the highest possible flexibility. The spotlight can be rotated through 360° and swivelled up to 30° around the horizontal axis. This enables light to be directed precisely where it is needed.

DE Ein patentierter Schwenkmechanismus schafft größtmögliche Flexibilität. Der Strahler kann nicht nur um 360° gedreht, sondern auch bis zu 30° um die horizontale Achse geschwenkt werden. Das ermöglicht die präzise Lenkung des Lichts genau dorthin, wo es gewünscht ist.



## Low recess depth

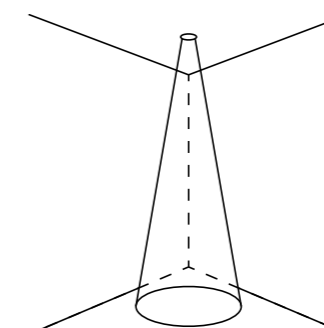
EN SASSO 40 complements XAL's SASSO product family with a small, flexible spotlight that is particularly impressive due to its low height. This makes it an ideal lighting solution for ceiling constructions with an unusually low installation depth.

DE SASSO 40 erweitert die SASSO-Produktfamilie von XAL um einen kleinen, flexiblen Strahler, der vor allem durch seine geringe Höhe überzeugt. Dadurch ist er eine optimale Lichtlösung für Deckenkonstruktionen mit besonders niedriger Einbautiefe.

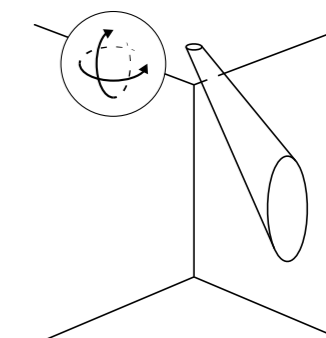
## Light distributions

EN SASSO has four optics and thus fulfils all the fundamental functions of your lighting concept. Vertical lighting is provided by downlights with different beam angles; wallwasher and wall-floor optics provide extensive wall and floor illumination; the adjustable spotlight sets accents. If the functional area changes, the optics in the luminaire housing can be simply replaced without tools.

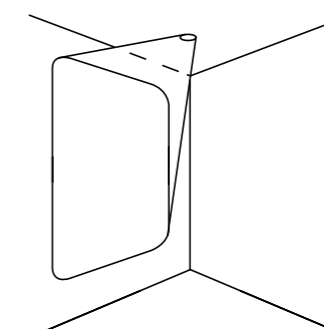
DE SASSO verfügt über vier Optiken und erfüllt so alle Grundfunktionen Ihres Beleuchtungskonzeptes. Vertikale Beleuchtung wird durch Downlights mit unterschiedlichen Abstrahlwinkeln erzielt, Wallwasher- und Wall-Floor-Optiken sorgen für großflächige Wand- sowie Bodenaufhellung, der Richtstrahler setzt Akzente. Wechselt der Funktionsbereich, kann die Optik im Leuchtgehäuse einfach und werkzeuglos getauscht werden.



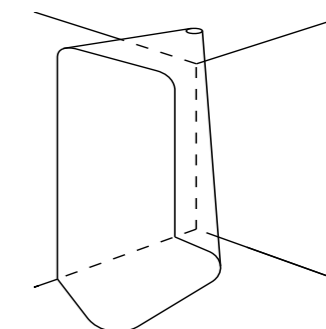
SASSO 60 downlight



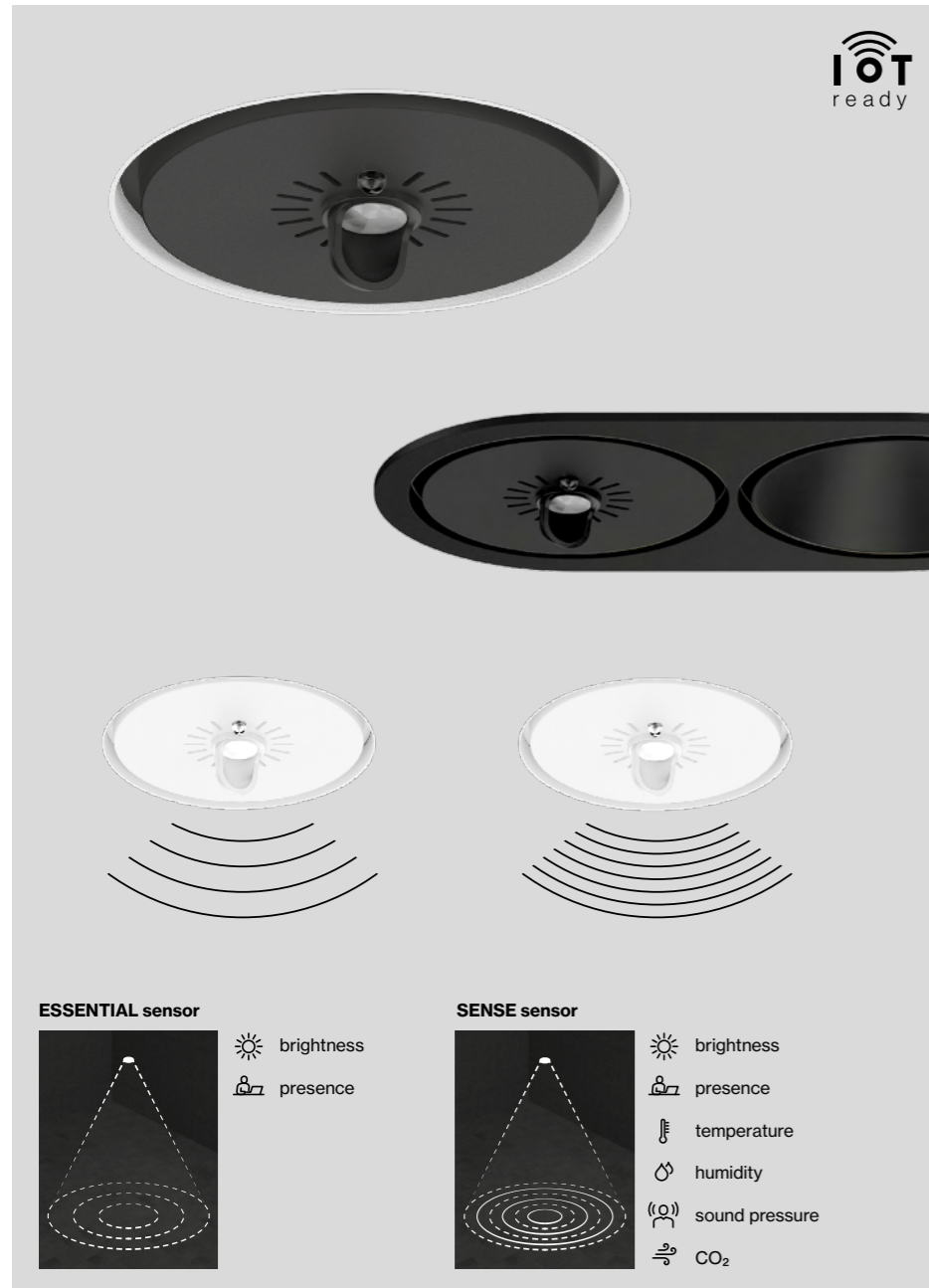
SASSO 60 adjustable



SASSO 60 wallwasher



SASSO 60 wallwasher floor



## Smart lighting

**EN** Special sensors expand the SASSO round recessed product family with smart lighting control and collection of insightful data. The ESSENTIAL sensor enables dynamic adjustment of the lighting to ambient brightness and room activity. The SENSE version also measures values such as temperature, air quality, humidity and noise level. These data not only provide important insights into the ambient conditions and use of rooms, but also support energy savings in the long term.

**DE** Spezielle Sensoren erweitern die SASSO round recessed-Produktfamilie um smarte Lichtsteuerung und aufschlussreiche Datenerhebung. Der ESSENTIAL-Sensor ermöglicht die dynamische Anpassung der Beleuchtung an Umgebungshelligkeit und Raumaktivität. Die SENSE-Variante misst außerdem Werte wie Temperatur, Luftqualität, Luftfeuchtigkeit und Geräuschpegel. Diese Daten liefern nicht nur wichtige Erkenntnisse über die Umgebungsbedingungen und Nutzung von Räumen, sondern unterstützen langfristig Energieeinsparungen.

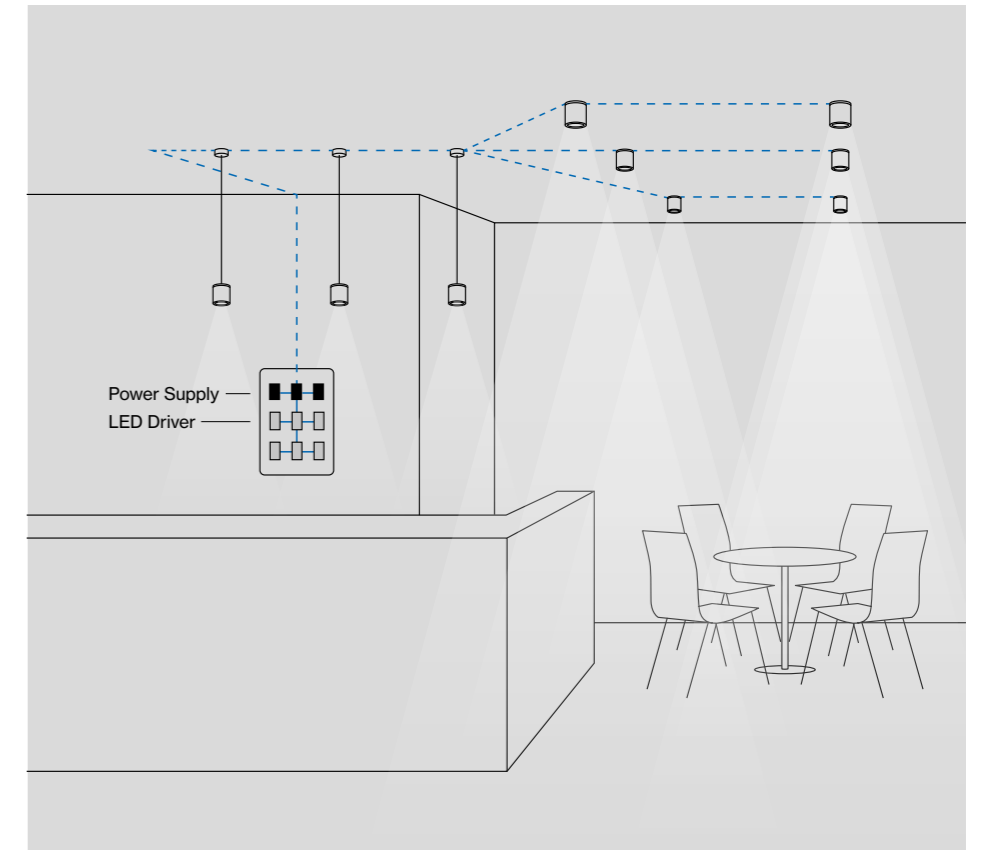
## DIN Rail (DALI)

**EN** The DIN Rail driver centralises the power supply of several spotlights. This simplifies both the installation and maintenance of a lighting system: drivers no longer have to be installed in false ceilings, but are located collectively in a control cabinet.

More information on page 981.

**DE** Der DIN Rail LED Treiber zentralisiert den Stromfluss mehrerer Strahler. Dies vereinfacht sowohl die Installation als auch die Wartung einer Lichtanlage: LED Treiber müssen nicht mehr in den Zwischendecken verbaut werden, sondern befinden sich gesammelt in einem Schaltschrank.

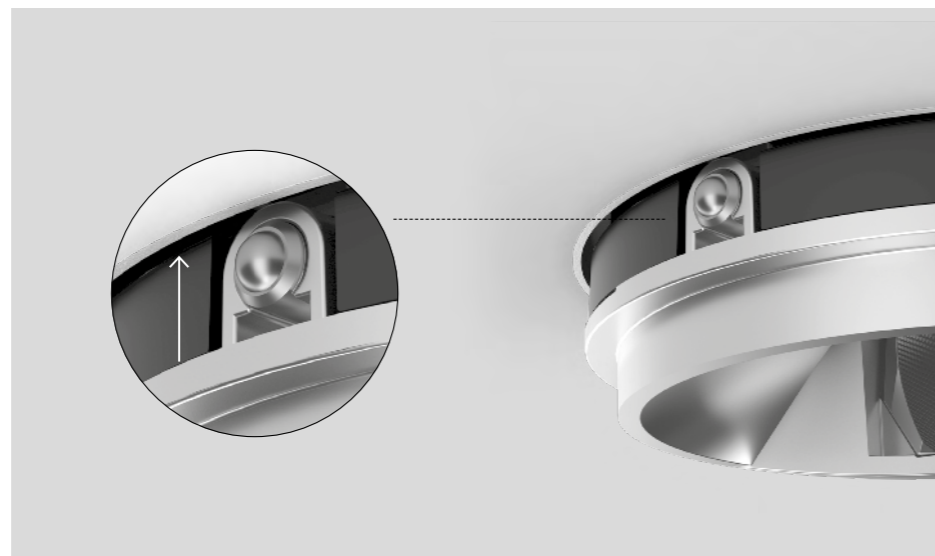
Mehr Informationen auf Seite 981.



## Ball catch system

**EN** SASSO spots are easy to replace. Assembly is quick and entirely without tools, thanks to a ball catch system. The lighting thus always adapts flexibly to new requirements and circumstances.

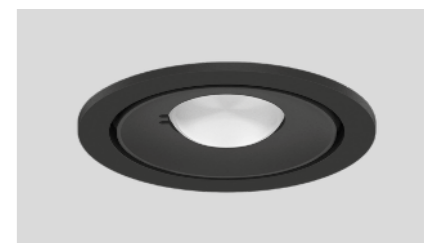
**DE** SASSO Spots sind einfach austauschbar: Die Montage erfolgt schnell und völlig ohne Werkzeug durch ein Kugelschnapsystem. So passt sich die Beleuchtung stets flexibel den neuen Anforderungen und Gegebenheiten an.



## CWD – Colour Warm Dimming

**EN** Warm light quality with reduced illuminance. Colour Warm Dimming reduces the light intensity while continuously changing the colour temperature between 3000K and 1800K. The function supports, for example, the change between cosy restaurant lighting during the day and a relaxing lighting mood in the evening.

**DE** Warme Lichtqualität bei reduzierter Beleuchtungsstärke: Colour Warm Dimming senkt zugleich die Lichtintensität und wechselt die Farbtemperatur stufenlos zwischen 3000K und 1800K. Die Funktion unterstützt etwa den Wechsel zwischen gemütlicher Restaurant-Beleuchtung tagsüber und einer entspannenden Lichtstimmung am Abend.

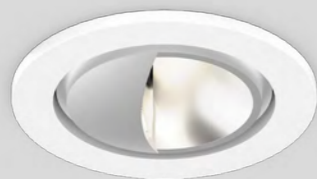


## Emergency light

**EN** The round emergency light inset can be easily added to a lighting system without tools. The battery life is three hours – that's how long the inset can be disconnected from the power supply. It is available in three versions: BASIC provides for functional checking at the push of a button, SELF-TEST indicates functionality by means of a status LED, and in the PRO variant the status can be called up via DALI.

**DE** Der runde Notlicht-Einsatz lässt sich einfach werkzeuglos einer Beleuchtungsanlage hinzufügen. Die Akkulaufzeit beträgt drei Stunden – so lange kann das Inset von der Stromzufuhr getrennt sein. Erhältlich ist es in drei Varianten: BASIC sieht die Funktionsüberprüfung via Knopfdruck vor, SELF-TEST zeigt die Funktionalität durch eine Status-LED an und in der PRO-Variante ist der Status via DALI abrufbar.

← back



## SASSO 40 round

recessed

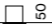
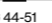
**EN** Round recessed spotlight; installation without tools in mounting set (trimless or with trim) with ball catch system; surface lacquered; installation possible in different housings; choice of adjustable / fixed symmetric or asymmetric radiation characteristic; variants with symmetric radiation characteristic: precise radiation characteristic due to high quality lens system; variants with asymmetric radiation characteristic: high-quality reflector with micro-faceted, aluminum-vaporised surface; COB (Chip on Board) technology for maximum efficiency (ADJUSTABLE and DOWNLIGHT); no multiple shadows; efficient LEDs with very good colour rendering

**DE** Runder Einbaustrahler; werkzeuglose Montage im Montageset (randlos oder mit umlaufendem Rand) durch Kugelschnappsystem; Oberfläche lackiert; Einbau in unterschiedlichen Gehäusen möglich; wahlweise einstellbar / starr symmetrische oder asymmetrische Abstrahlcharakteristik; symmetrisch strahlende Varianten: präzise Abstrahlcharakteristik durch hochwertige Linsenoptik; asymmetrische strahlende Varianten: hochwertiger Reflektor mit mikrofacettierter, aluminiumbedampfter Oberfläche; COB (Chip on Board) Technologie für höchste Effizienz (ADJUSTABLE und DOWNLIGHT); keine Mehrfachschatten; effiziente LEDs mit sehr guter Farbwiedergabe

### Quickinfo

2700 K, 3000 K, 4000 K  
CRI ≥ 90, 2 SDCM  
up to 97 lm/W  
L80 @ 50 000 h  
non DIM, DALI-2  
↓ IP 44 / ↑ IP 20

### Types

trim    
ø 44-51

trimless    
ø 48

### Housing colours



### Inset colours



### Light distributions



### Order options

COLOUR TEMPERATURE	
2700 K	4
3000 K	5
4000 K	6

INSET COLOUR	
○ traffic white RAL 9016 (UGR ≤ 22)	7
● matt silver (UGR ≤ 19)	4
● jet black RAL 9005 (UGR ≤ 16)	1
● gold dust RAL 260-M (UGR ≤ 19)	9

BEAM ANGLE	
spot 14°	S
medium 27°	M
flood 45°	F

### Options on request

POWER SUPPLY  
DIM 1–10 V

80  
non DIM  
110  
DALI-2

80  
non DIM  
110  
DALI-2

80  
non DIM  
110  
DALI-2

80  
non DIM  
110  
DALI-2

56

56



### SASSO 40 round



#### ADJUSTABLE (↓ IP 40 / ↑ IP 20)

INSET POWER	LUMINOUS FLUX	ORDER CODE
7.4 W 36 Vf 200 mA	624 lm	0 4 8 - 2 8 2 0 :: 1 ▽ ▲

#### DOWNLIGHT (↓ IP 44 / ↑ IP 20)

INSET POWER	LUMINOUS FLUX	ORDER CODE
7.4 W 36 Vf 200 mA	624 lm	0 4 8 - 2 8 0 0 :: 1 ▽ ▲



#### WALLWASHER (IP 20)

INSET POWER	LUMINOUS FLUX	ORDER CODE
6.8 W 27 Vf 250 mA	605 lm	0 4 8 - 2 8 4 0 :: 1 ▽ ▲

#### WALLWASHER / FLOOR (IP 20)

INSET POWER	LUMINOUS FLUX	ORDER CODE
6.8 W 27 Vf 250 mA	659 lm	0 4 8 - 2 8 4 0 :: 1 ▽ ▲ W

### Mounting accessories

TRIMLESS MOUNTING SET for plasterboard ceilings 12.5/15/25 mm

COLOUR	ORDER CODE
○ traffic white RAL9016	0 4 8 - 2 8 9 6 1 1 7

MOUNTING SET WITH TRIM for intermediate ceilings 2–25 mm

COLOUR	ORDER CODE
○ traffic white RAL9016	0 4 8 - 2 8 9 6 3 1 7
● jet black RAL 9005	0 4 8 - 2 8 9 6 3 1 8

### Electrical accessories

POWER SUPPLY 220-240 V AC, 50-60 Hz, □ PC II

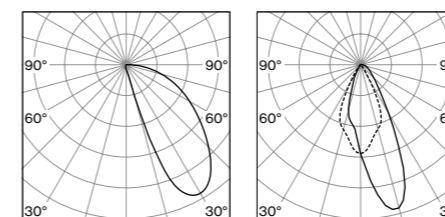
TYPE	EFFICIENCY	L-W-H (mm)	ORDER CODE
200 mA   non DIM	η 80 %	65-39-20	0 0 2 - 9 0 7 4 4
200 mA   DALI-2	η 82 %	166-30-22	0 0 2 - 9 0 7 4 5
250 mA   non DIM	η 80 %	65-39-20	0 0 2 - 9 0 7 4 2
250 mA   DALI-2	η 82 %	166-30-22	0 0 2 - 9 0 7 4 3

### DIN RAIL COMPONENTS

TYPE	W-H-D (mm)	ORDER CODE
POWER SUPPLY 220-240 V AC 96 W   48 V DC constant voltage	90-90-60	0 0 5 - 6 5 2 0 2 1 0
LED DRIVER DALI-2 DT6 1-2 addr. 200–1050 mA settable const. current 2 × 42 W   48 V DC   U <sub>OUT</sub> 10–40 V	36-88-59	0 0 5 - 6 1 2 1 0 3 0

for more details and components see page 981

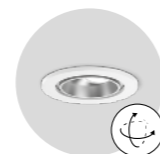
### Light distributions



wallwasher

wallwasher floor

**INSET POWER** is the current consumption excluding any ballast  
**LUMINOUS FLUX** value calculated for 3000 K, CRI ≥ 90, colour white, flood 2700 K -5%, 4000 K +5%



rotatable 360°,  
tiltable 30°



wallwasher and  
ww floor inset



glare control  
(UGR ≤ 16)



60 mm recess  
depth (DIN rail)



← back



## SASSO 60 round

recessed

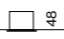
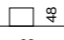
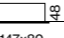
**EN** Round recessed spotlight; installation without tools in mounting set (trimless or with trim) with ball catch system; surface lacquered; installation possible in different housings; choice of adjustable / fixed symmetric or asymmetric radiation characteristic; variants with symmetric radiation characteristic: precise radiation characteristic due to high quality lens system; variants with asymmetric radiation characteristic: high-quality reflector with micro-faceted, aluminum-vaporised surface; COB (Chip on Board) technology for maximum efficiency (ADJUSTABLE and DOWNLIGHT); no multiple shadows; efficient LEDs with very good colour rendering

**DE** Runder Einbaustrahler; werkzeuglose Montage im Montageset (randlos oder mit umlaufendem Rand) durch Kugelschnappsystem; Oberfläche lackiert; Einbau in unterschiedlichen Gehäusen möglich; wahlweise einstellbar / starr symmetrische oder asymmetrische Abstrahlcharakteristik; symmetrisch strahlende Varianten: präzise Abstrahlcharakteristik durch hochwertige Linsenoptik; asymmetrische strahlende Varianten: hochwertiger Reflektor mit mikrofacettierter, aluminiumbedampfter Oberfläche; COB (Chip on Board) Technologie für höchste Effizienz (ADJUSTABLE und DOWNLIGHT); keine Mehrfachschatten; effiziente LEDs mit sehr guter Farbwiedergabe

### Quickinfo

2700 K, 3000 K, 4000 K, CWD  
CRI ≥ 90, 2 SDCM  
up to 107 lm/W  
L80 @ 50 000 h  
non DIM, DALI-2  
↓ IP 44 / ↑ IP 20

### Types

trim		48
	ø 80	
trimless		48
	ø 63	
double trim		48
	147x80	

### Housing colours



### Inset colours



### Light distributions



rotatable 360°,  
tiltable 30°



wallwasher and  
ww floor inset



glare control  
(UGR ≤ 16)



60 mm  
recess depth



CWD  
1800–3000 K

### Order options

<b>COLOUR TEMPERATURE</b>	☼☼
2700 K	4
3000 K	5
4000 K	6
CWD 1800–3000 K*	

\*only for DALI-2

<b>INSET COLOUR</b>	☑
○ traffic white RAL 9016 (UGR ≤ 22)	7
● matt silver (UGR ≤ 19)	4
● jet black RAL 9005 (UGR ≤ 16)	1
● gold dust RAL 260-M (UGR ≤ 19)	9

<b>BEAM ANGLE</b>	▲
spot 15°	S
medium 21°	M
flood 42°	F

### Options on request

**COLOR RENDERING INDEX**  
CRI ≥ 95, 2 SDCM

### CONTROL

Casambi

### MOUNTING SET

acoustic soft ceilings

### POWER SUPPLY

DIM 1–10 V

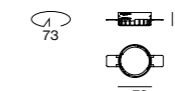


60  
non DIM  
120  
DALI-2

60  
non DIM  
120  
DALI-2

60  
non DIM  
120  
DALI-2

60  
non DIM  
120  
DALI-2



73

73

70 × 136

73

70 × 136

73

70 × 136

73

70 × 136

73

70 × 136

### SASSO 60 round



#### ADJUSTABLE (↓ IP 40 / ↑ IP 20)

<b>INSET POWER</b>	<b>LUMINOUS FLUX</b>	<b>ORDER CODE</b>
10.7 W 36 Vf 300 mA	1040 lm	0 4 8 - 2 6 2 2 :: 1 ☑ ▲
10.4 W 35 Vf 300 mA	CWD 949 lm	0 4 8 - 2 6 2 2 E 1 ☑ ▲

#### DOWNLIGHT (↓ IP 44 / ↑ IP 20)

<b>INSET POWER</b>	<b>LUMINOUS FLUX</b>	<b>ORDER CODE</b>
10.7 W 36 Vf 300 mA	1070 lm	0 4 8 - 2 6 0 2 :: 1 ☑ ▲
10.4 W 35 Vf 300 mA	CWD 949 lm	0 4 8 - 2 6 0 2 E 1 ☑ ▲



#### WALLWASHER (IP 20)

<b>INSET POWER</b>	<b>LUMINOUS FLUX</b>	<b>ORDER CODE</b>
8.2 W 27 Vf 300 mA	635 lm	0 4 8 - 2 6 4 1 :: 1 ☑ ▲

#### WALLWASHER/FLOOR (IP 20)

<b>INSET POWER</b>	<b>LUMINOUS FLUX</b>	<b>ORDER CODE</b>
8.2 W 27 Vf 300 mA	633 lm	0 4 8 - 2 6 4 1 :: 1 ☑ ▲

### Mounting accessories

**TRIMLESS MOUNTING SET** for plasterboard ceilings 12.5/15/25 mm

<b>COLOUR</b>	<b>ORDER CODE</b>
○ traffic white RAL9016	0 4 8 - 2 6 9 6 1 1 7

**MOUNTING SET WITH TRIM** for intermediate ceilings 2–25 mm

<b>TYPE</b>	<b>COLOUR</b>	<b>ORDER CODE</b>
1 lamp	● white aluminium RAL 9006	0 4 8 - 2 6 9 6 3 1 G
	○ traffic white RAL9016	0 4 8 - 2 6 9 6 3 1 7
	● jet black RAL 9005	0 4 8 - 2 6 9 6 3 1 8
2 lamps	● white aluminium RAL 9006	0 4 8 - 2 6 9 8 3 1 G
	○ traffic white RAL9016	0 4 8 - 2 6 9 8 3 1 7
	● jet black RAL 9005	0 4 8 - 2 6 9 8 3 1 8

### CONCRETE MOUNTING HOUSING

<b>COLOUR</b>	<b>L-W-H (mm)</b>	<b>ORDER CODE</b>
exposed concrete ceilings	230-230-162	0 4 8 - 2 6 9 5 2 1 0
primed concrete ceilings*	614-307-120	0 4 8 - 2 6 9 5 1 1 0

\*order mounting set separately, not applicable for 2 lamps mounting set with trim

### Electrical accessories

**POWER SUPPLY** 220-240 V AC, 50-60 Hz, □ PC II

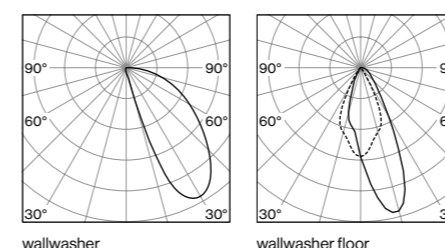
<b>TYPE</b>	<b>EFFICIENCY</b>	<b>L-W-H (mm)</b>	<b>ORDER CODE</b>
300 mA   non DIM	η 85 %	85-40-22	0 0 2 - 9 0 7 7 1
300 mA   DALI-2	η 88 %	143-43-30	0 0 2 - 9 0 7 6 2

### DIN RAIL COMPONENTS

<b>TYPE</b>	<b>W-H-D (mm)</b>	<b>ORDER CODE</b>
POWER SUPPLY 220-240 V AC	90-90-60	0 0 5 - 6 5 2 0 2 1 0
96 W   48 V DC constant voltage		
LED DRIVER DALI-2 DT6 1-2 addr.	36-88-59	0 0 5 - 6 1 2 1 0 3 0
200–1050 mA settable const. current		
2 × 42 W   48 V DC   U <sub>OUT</sub> 10–40 V		

for more details and components see page 981

### Light distributions



**INSET POWER** is the current consumption excluding any ballast  
**LUMINOUS FLUX** value calculated for 3000 K, CRI ≥ 90, colour white, flood 2700 K -5%, 4000 K +5%

← back



## SASSO 100 round

recessed

**EN** Round recessed spotlight; installation without tools in mounting set (trimless or with trim) with ball catch system; surface lacquered; installation possible in different housings; choice of adjustable / fixed symmetric or asymmetric radiation characteristic; variants with symmetric radiation characteristic: precise radiation characteristic due to high quality lens system; variants with asymmetric radiation characteristic: high-quality reflector with micro-faceted, aluminum-vaporised surface; COB (Chip on Board) technology for maximum efficiency (ADJUSTABLE and DOWNLIGHT); no multiple shadows; efficient LEDs with very good colour rendering

**DE** Runder Einbaustrahler; werkzeuglose Montage im Montageset (randlos oder mit umlaufendem Rand) durch Kugelschnappsystem; Oberfläche lackiert; Einbau in unterschiedlichen Gehäusen möglich; wahlweise einstellbar / starr symmetrische oder asymmetrische Abstrahlcharakteristik; symmetrisch strahlende Varianten: präzise Abstrahlcharakteristik durch hochwertige Linsenoptik; asymmetrische strahlende Varianten: hochwertiger Reflektor mit mikrofacettierter, aluminiumbedampfter Oberfläche; COB (Chip on Board) Technologie für höchste Effizienz (ADJUSTABLE und DOWNLIGHT); keine Mehrfachschatten; effiziente LEDs mit sehr guter Farbwiedergabe

### Quickinfo

2700 K, 3000 K, 4000 K  
CRI ≥ 90, 2 SDCM  
up to 120 lm/W  
L80 @ 50 000 h  
non DIM, DALI-2  
↓ IP 44 / ↑ IP 20

### Types

trim		75 95 (depth)	ø 118
trimless		75	ø 97
double trim		75 95 (depth)	218x118

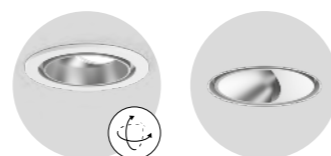
### Housing colours



### Inset colours



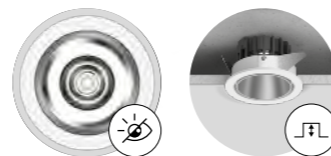
### Light distributions



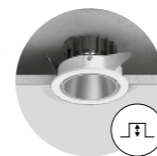
rotatable 360°,  
tiltable 30°



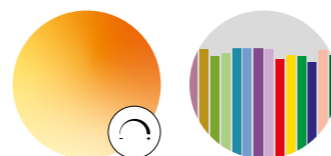
wallwasher and  
ww floor inset



glare control  
(UGR ≤ 16)



80 mm  
recess depth



CWD  
1800–3000 K



CRI ≥ 95  
2 SDCM

### Order options

COLOUR TEMPERATURE	
2700 K	4
3000 K	5
4000 K	6

INSET COLOUR	
○ traffic white RAL 9016 (UGR ≤ 22)	7
● matt silver (UGR ≤ 19)	4
● jet black RAL 9005 (UGR ≤ 16)	1
● gold dust RAL 260-M (UGR ≤ 19)	9

BEAM ANGLE	
spot 19°	S
medium 34°	M
flood 45°	F
wide flood 65°	W

### Options on request

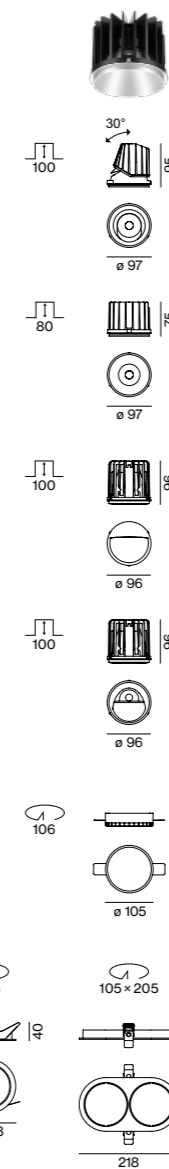
COLOR RENDERING INDEX  
CRI ≥ 95, 2 SDCM

COLOUR TEMPERATURE  
CWD 1800–3000 K  
not for WW & WWF version

CONTROL  
Casambi

MOUNTING SET  
acoustic soft ceilings

POWER SUPPLY  
DIM 1–10 V



### SASSO 100 round



#### ADJUSTABLE (↓ IP 40 / ↑ IP 20)

INSET POWER	LUMINOUS FLUX	ORDER CODE
17.2 W 36 Vf 500 mA	1850 lm	0 4 8 - 2 7 2 0 :: 1 1 4
25 W 36 Vf 700 mA	2450 lm	0 4 8 - 2 7 2 0 :: 1 1 4

#### DOWNLIGHT (↓ IP 44 / ↑ IP 20)

INSET POWER	LUMINOUS FLUX	ORDER CODE
17.2 W 36 Vf 500 mA	1830 lm	0 4 8 - 2 7 0 0 :: 1 1 4
25 W 36 Vf 700 mA	2410 lm	0 4 8 - 2 7 0 0 :: 1 1 4



#### WALLWASHER (IP 20)

INSET POWER	LUMINOUS FLUX	ORDER CODE
25 W 36 Vf 700 mA	2290 lm	0 4 8 - 2 7 4 0 :: 1 1 4

#### WALLWASHER/FLOOR (IP 20)

INSET POWER	LUMINOUS FLUX	ORDER CODE
23.4 W 36 Vf 700 mA	2670 lm	0 4 8 - 2 7 4 0 :: 1 1 4

### Mounting accessories

TRIMLESS MOUNTING SET for plasterboard ceilings 12.5/15/25 mm

COLOUR	ORDER CODE
○ traffic white RAL9016	0 4 8 - 2 7 9 6 1 1 7

MOUNTING SET WITH TRIM for intermediate ceilings 2–25 mm

TYPE	COLOUR	ORDER CODE
1 lamp	● white aluminium RAL 9006	0 4 8 - 2 7 9 6 3 1 G
	○ traffic white RAL9016	0 4 8 - 2 7 9 6 3 1 7
	● jet black RAL 9005	0 4 8 - 2 7 9 6 3 1 8
2 lamps	● white aluminium RAL 9006	0 4 8 - 2 7 9 8 3 1 G
	○ traffic white RAL9016	0 4 8 - 2 7 9 8 3 1 7
	● jet black RAL 9005	0 4 8 - 2 7 9 8 3 1 8

#### CONCRETE MOUNTING HOUSING

COLOUR	L-W-H (mm)	ORDER CODE
exposed concrete ceilings	230-230-162	0 4 8 - 2 7 9 5 2 1 0
primed concrete ceilings*	614-307-120	0 4 8 - 2 6 9 5 1 1 0

\*order mounting set separately, not applicable for 2 lamps mounting set with trim

### Electrical accessories

POWER SUPPLY 220-240 V AC, 50-60 Hz, □ PC II

TYPE	EFFICIENCY	L-W-H (mm)	ORDER CODE
500 mA   non DIM	η 88 %	143-43-30	0 0 2 - 9 0 7 7 7
500 mA   DALI-2	η 88 %	143-43-30	0 0 2 - 9 0 7 7 9
700 mA   non DIM	η 80 %	143-43-30	0 0 2 - 9 0 7 7 4
700 mA   DALI-2	η 88 %	143-43-30	0 0 2 - 9 0 7 7 6

#### THROUGH WIRING CONNECTION BOX

TYPE	L-W-H (mm)	ORDER CODE
non DIM cable ø 4–12 mm	105-58-30	0 0 5 - 2 5 3 1 1 1 0
DALI cable ø 4–12 mm	105-58-30	0 0 5 - 2 5 5 1 1 1 0

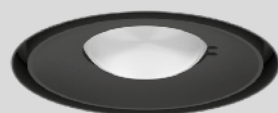
#### DIN RAIL COMPONENTS

TYPE	W-H-D (mm)	ORDER CODE
POWER SUPPLY 220-240 V AC 96 W   48 V DC constant voltage	90-90-60	0 0 5 - 6 5 2 0 2 1 0
LED DRIVER DALI-2 DT6 1–2 addr. 200–1050 mA settable const. current 2 × 42 W   48 V DC   U <sub>OUT</sub> 10–40 V	36-88-59	0 0 5 - 6 1 2 1 0 3 0

for more details and components see page 981

INSET POWER is the current consumption excluding any ballast  
LUMINOUS FLUX value calculated for 3000 K, CRI ≥ 90, colour white, wide flood  
2700 K -5%, 4000 K +5%





## SASSO 60 round sensor/emergency

recessed

EN Round inset (Emergency Light or Sensor); installation without tools in mounting set (trimless or with trim) with ball catch system; surface lacquered; installation possible in different housings; LED emergency light inset: 3 variants with different test possibilities - BASIC with test button, SELF-TEST with status LED or PRO DALI-2 with monitoring via DALI; sensor with DALI-2 control: 2 variants - ESSENTIAL with brightness and presence sensor or SENSE with additional temperature, humidity, air quality and noise level measurement

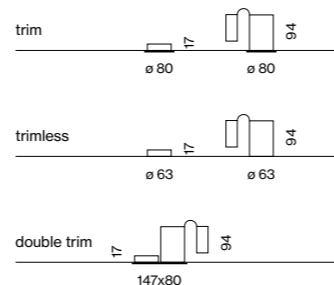
DE Runder Einsatz (Notlicht bzw. Sensor); werkzeuglose Montage im Montageset (randlos oder mit umlaufendem Rand) durch Kugelschnappsystem; Oberfläche lackiert; Einbau in unterschiedlichen Gehäusen möglich; LED Notlicht-Einsatz: 3 Varianten mit verschiedenen Testmöglichkeiten - BASIC mit Prüftaste, SELF-TEST mit Status-LED oder PRO DALI-2 mit Überwachung über DALI; Sensor mit DALI-2 Steuerung: 2 Varianten - ESSENTIAL mit Helligkeits- und Anwesenheitssensor oder SENSE mit zusätzlicher Temperatur-, Luftfeuchtigkeits-, Luftqualitäts- und Lärmpegelmessung

### Quickinfo

sensor  
ESSENTIAL, SENSE  
DALI-2

emergency light  
6500K  
CRI ≥ 80  
200lm  
L80 @ 50000h  
non maintained

### Types



### Housing colours



### Inset colours



### Sensors



### Order options

**INSET COLOUR**   
 traffic white RAL 9016 7  
 jet black RAL 9005 1

### BEAM ANGLE EMERGENCY LIGHT

spot lens  
escape route lens  
anti panic lens

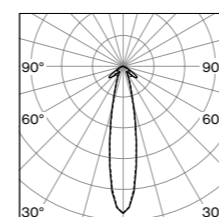
### Options on request

**MOUNTING SET**  
acoustic soft ceilings

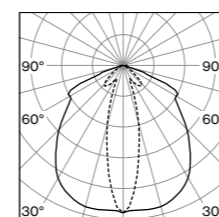
### INSET COLOUR

grey, gold

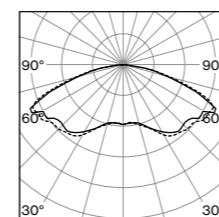
### Light distributions



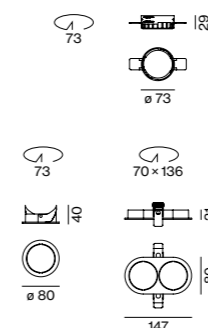
emergency light  
spot lens



emergency light  
escape route lens



emergency light  
anti panic lens



### SASSO 60 sensor round



#### ESSENTIAL SENSOR

**TYPE**  
brightness & presence **ORDER CODE**  
048-269311



#### SENSE SENSOR

**TYPE**  
brightness, presence, temperature,  
sound pressure, humidity, CO<sub>2</sub> **ORDER CODE**  
048-269312

### SASSO 60 emergency light round



#### EMERGENCY 3h

**TYPE**  
BASIC | 2W **ORDER CODE** 048-269321  
SELF-TEST | 2W **ORDER CODE** 048-269322  
PRO DALI-2 | 2W **ORDER CODE** 048-269323  
incl. 3 interchangeable lenses

### Electrical accessories

**ACCUPACK**  
**TYPE**  
replacement accupack 3h **ORDER CODE**  
048-2693910

### Mounting accessories

**TRIMLESS MOUNTING SET** for plasterboard ceilings 12.5/15/25mm  
**COLOUR**  
 traffic white RAL9016 **ORDER CODE** 048-2696117

**MOUNTING SET WITH TRIM** for intermediate ceilings 2-25mm  
**TYPE** **COLOUR** **ORDER CODE**  
1 lamp  traffic white RAL9016 048-2696317  
 jet black RAL 9005 048-2696318  
2 lamps  traffic white RAL9016 048-2698317  
 jet black RAL 9005 048-2698318

**CONCRETE MOUNTING HOUSING**  
**COLOUR** **L-W-H (mm)** **ORDER CODE**  
exposed concrete ceilings 230-230-162 048-2695210  
primed concrete ceilings\* 614-307-120 048-2695110

\*order mounting set separately, not applicable for 2 lamps mounting set with trim



**Deansgate Square** Manchester, UK –  
by Lister & Lister with lighting design  
by Troup, Bywaters & Anders Lighting

**Deansgate Square** Manchester, UK –  
by Lister & Lister with lighting design  
by Troup, Bywaters & Anders Lighting



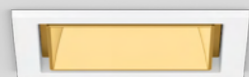
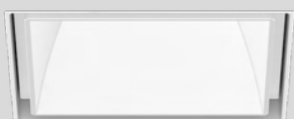
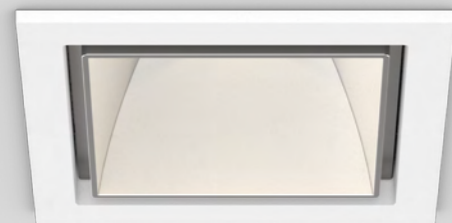
**HeidelbergCement AG**  
Heidelberg, DE – by Albert Speer +  
Partner Architekten with lighting  
design by Hailight Lichtplanung,  
Andreas Haidegger





**Oppenländer Rechtsanwälte**  
Stuttgart, DE – by Ippolito Fleitz  
Group GmbH





## SASSO 60 square

recessed

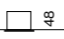
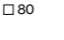
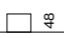
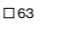
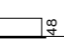
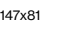
**EN** Square recessed spotlight; installation without tools in mounting set (trimless or with trim) with ball catch system; surface lacquered; installation possible in different housings; choice of fixed symmetric or asymmetric radiation characteristic; variants with symmetric radiation characteristic: precise radiation characteristic due to high quality lens system; variants with asymmetric radiation characteristic: high-quality reflector with micro-faceted, aluminum-vaporised surface; COB (Chip on Board) technology for maximum efficiency (DOWNLIGHT); no multiple shadows; efficient LEDs with very good colour rendering

**DE** Quadratischer Einbaustrahler; werkzeuglose Montage im Montageset (randlos oder mit umlaufendem Rand) durch Kugelschnapsystem; Oberfläche lackiert; Einbau in unterschiedlichen Gehäusen möglich; wahlweise starr symmetrische oder asymmetrische Abstrahlcharakteristik; symmetrisch strahlende Varianten: präzise Abstrahlcharakteristik durch hochwertige Linsenoptik; asymmetrische strahlende Varianten: hochwertiger Reflektor mit mikrofaccettierter, aluminiumbedampfter Oberfläche; COB (Chip on Board) Technologie für höchste Effizienz (DOWNLIGHT); keine Mehrfachschatten; effiziente LEDs mit sehr guter Farbwiedergabe

### Quickinfo

2700 K, 3000 K, 4000 K, CWD  
CRI ≥ 90, 2 SDCM  
up to 110 lm/W  
L80 @ 50 000 h  
non DIM, DALI-2  
↓ IP 44 / ↑ IP 20

### Types

trim		48
		80
trimless		48
		63
double trim		48
		147x81

### Housing colours



### Inset colours



### Light distributions



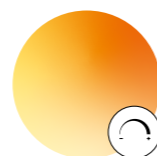
wallwasher and  
ww floor inset



glare control  
(UGR ≤ 16)



60 mm  
recess depth



CWD  
1800–3000 K



CRI ≥ 95  
2 SDCM

### Order options

<b>COLOUR TEMPERATURE</b>	☐☐☐
2700 K	4
3000 K	5
4000 K	6
CWD 1800–3000 K*	

\*only for DALI-2

### INSET COLOUR

☐ traffic white RAL 9016 (UGR ≤ 22)	7
● matt silver (UGR ≤ 19)	4
● jet black RAL 9005 (UGR ≤ 16)	1
● gold dust RAL 260-M (UGR ≤ 19)	9

### BEAM ANGLE

spot 15°	S
medium 21°	M
flood 42°	F

### Options on request

#### COLOR RENDERING INDEX

CRI ≥ 95, 2 SDCM

#### CONTROL

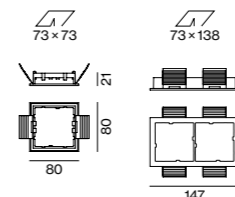
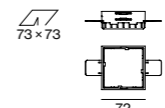
Casambi

#### MOUNTING SET

acoustic soft ceilings

#### POWER SUPPLY

DIM 1–10 V



### SASSO 60 square



#### DOWNLIGHT (↓ IP 44 / ↑ IP 20)

<b>INSET POWER</b>	<b>LUMINOUS FLUX</b>	<b>ORDER CODE</b>
10.7 W 36 Vf 300 mA	1180 lm	0 4 8 - 2 6 1 2 :: 1 1 A
10.4 W 35 Vf 300 mA	CWD 949 lm	0 4 8 - 2 6 1 2 E 1 A



#### WALLWASHER (IP 20)

<b>INSET POWER</b>	<b>LUMINOUS FLUX</b>	<b>ORDER CODE</b>
8.2 W 27 Vf 300 mA	635 lm	0 4 8 - 2 6 5 1 :: 1 1 A

#### WALLWASHER/FLOOR (IP 20)

<b>INSET POWER</b>	<b>LUMINOUS FLUX</b>	<b>ORDER CODE</b>
8.2 W 27 Vf 300 mA	633 lm	0 4 8 - 2 6 5 1 :: 1 1 W

### Mounting accessories

#### TRIMLESS MOUNTING SET for plasterboard ceilings 12.5/15/25 mm

<b>COLOUR</b>	<b>ORDER CODE</b>
☐ traffic white RAL9016	0 4 8 - 2 6 9 7 1 1 7

#### MOUNTING SET WITH TRIM for intermediate ceilings 2–25 mm

<b>TYPE</b>	<b>COLOUR</b>	<b>ORDER CODE</b>
1 lamp	● white aluminium RAL 9006	0 4 8 - 2 6 9 7 3 1 G
	☐ traffic white RAL9016	0 4 8 - 2 6 9 7 3 1 7
	● jet black RAL 9005	0 4 8 - 2 6 9 7 3 1 8
2 lamps	● white aluminium RAL 9006	0 4 8 - 2 6 9 9 3 1 G
	☐ traffic white RAL9016	0 4 8 - 2 6 9 9 3 1 7
	● jet black RAL 9005	0 4 8 - 2 6 9 9 3 1 8

#### CONCRETE MOUNTING HOUSING

<b>COLOUR</b>	<b>L-W-H (mm)</b>	<b>ORDER CODE</b>
primed concrete ceilings*	614-307-120	0 4 8 - 2 6 9 5 1 1 0

\*order mounting set separately, not applicable for 2 lamps mounting set with trim

### Electrical accessories

#### POWER SUPPLY 220-240 V AC, 50-60 Hz, ☐ PC II

<b>TYPE</b>	<b>EFFICIENCY</b>	<b>L-W-H (mm)</b>	<b>ORDER CODE</b>
300 mA   non DIM	η 85 %	85-40-22	0 0 2 - 9 0 7 7 1
300 mA   DALI-2	η 88 %	143-43-30	0 0 2 - 9 0 7 6 2

#### THROUGH WIRING CONNECTION BOX

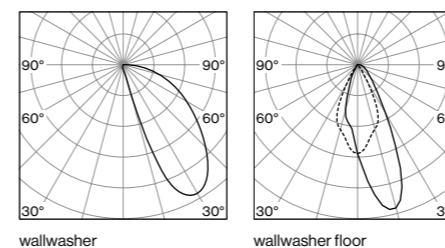
<b>TYPE</b>	<b>L-W-H (mm)</b>	<b>ORDER CODE</b>
non DIM cable ø 4–12 mm	105-58-30	0 0 5 - 2 5 3 1 1 1 0
DALI cable ø 4–12 mm	105-58-30	0 0 5 - 2 5 5 1 1 1 0

#### DIN RAIL COMPONENTS

<b>TYPE</b>	<b>W-H (mm)</b>	<b>ORDER CODE</b>
POWER SUPPLY 220-240 V AC	90-90-60	0 0 5 - 6 5 2 0 2 1 0
96 W   48V DC constant voltage		
LED DRIVER DALI-2 DT6 1–2 addr.	36-88-59	0 0 5 - 6 1 2 1 0 3 0
200–1050 mA settable const. current		
2 × 42 W   48 V DC   U <sub>OUT</sub> 10–40 V		

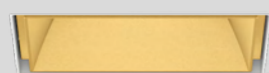
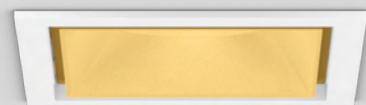
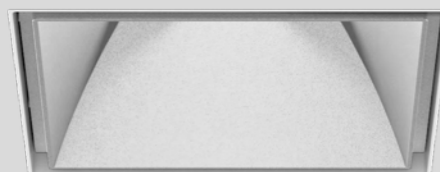
for more details and components see page 981

### Light distributions



**INSET POWER** is the current consumption excluding any ballast  
**LUMINOUS FLUX** value calculated for 3000 K, CRI ≥ 90, colour white, flood 2700 K -5%, 4000 K +5%

← back



## SASSO 100 square

recessed


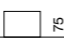
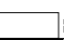
**EN** Square recessed spotlight; installation without tools in mounting set (trimless or with trim) with ball catch system; surface lacquered; installation possible in different housings; choice of adjustable / fixed symmetric or asymmetric radiation characteristic; variants with symmetric radiation characteristic: precise radiation characteristic due to high quality lens system; variants with asymmetric radiation characteristic: high-quality reflector with micro-faceted, aluminum-vaporised surface; COB (Chip on Board) technology for maximum efficiency (ADJUSTABLE and DOWNLIGHT); no multiple shadows; efficient LEDs with very good colour rendering

**DE** Quadratischer Einbaustrahler; werkzeuglose Montage im Montageset (randlos oder mit umlaufendem Rand) durch Kugelschnapsystem; Oberfläche lackiert; Einbau in unterschiedlichen Gehäusen möglich; wahlweise einstellbar / starr symmetrische oder asymmetrische Abstrahlcharakteristik; symmetrisch strahlende Varianten: präzise Abstrahlcharakteristik durch hochwertige Linsenoptik; asymmetrische strahlende Varianten: hochwertiger Reflektor mit mikrofacetierter, aluminiumbedampfter Oberfläche; COB (Chip on Board) Technologie für höchste Effizienz (ADJUSTABLE und DOWNLIGHT); keine Mehrfachschatten; effiziente LEDs mit sehr guter Farbwiedergabe

### Quickinfo

2700 K, 3000 K, 4000 K  
CRI ≥ 90, 2 SDCM  
up to 120 lm/W  
L80 @ 50 000 h  
non DIM, DALI-2  
↓ IP 44 / ↑ IP 20

### Types

trim		75	95 (incl.)
	□ 118		
trimless		75	95 (incl.)
	□ 97		
double trim		75	95 (incl.)
	218x118		

### Housing colours



### Inset colours



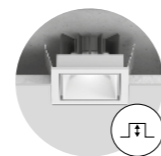
### Light distributions



wallwasher and  
ww floor inset



glare control  
(UGR ≤ 16)



60 mm  
recess depth



CWD  
1800-3000 K



CRI ≥ 95  
2 SDCM

### Order options

<b>COLOUR TEMPERATURE</b>	☑
2700 K	4
3000 K	5
4000 K	6

<b>INSET COLOUR</b>	☑
○ traffic white RAL 9016 (UGR ≤ 22)	7
● matt silver (UGR ≤ 19)	4
● jet black RAL 9005 (UGR ≤ 16)	1
● gold dust RAL 260-M (UGR ≤ 19)	9

<b>BEAM ANGLE</b>	▲
spot 19°	S
medium 34°	M
flood 45°	F
wide flood 65°	W

### Options on request

**COLOR RENDERING INDEX**  
CRI ≥ 95, 2 SDCM

**COLOUR TEMPERATURE**  
CWD 1800-3000 K  
not for WW & WWF version

### CONTROL

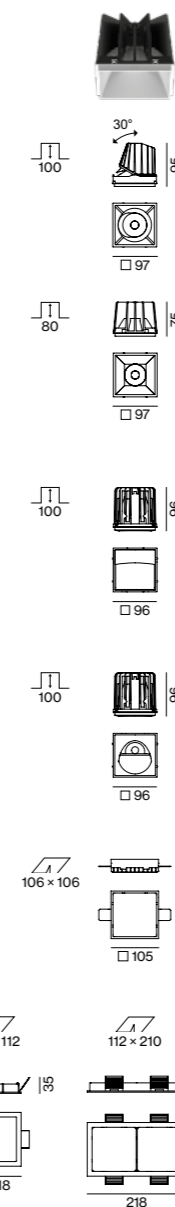
Casambi

### MOUNTING SET

acoustic soft ceilings

### POWER SUPPLY

DIM 1-10 V



### SASSO 100 square



#### ADJUSTABLE (↓ IP 40 / ↑ IP 20)

<b>INSET POWER</b>	<b>LUMINOUS FLUX</b>	<b>ORDER CODE</b>
17.2 W 36 Vf 500 mA	1860 lm	0 4 8 - 2 7 3 0 :: 1 1 4
25 W 36 Vf 700 mA	2450 lm	0 4 8 - 2 7 3 0 :: 1 1 4

#### DOWNLIGHT (↓ IP 44 / ↑ IP 20)

<b>INSET POWER</b>	<b>LUMINOUS FLUX</b>	<b>ORDER CODE</b>
17.2 W 36 Vf 500 mA	1890 lm	0 4 8 - 2 7 1 0 :: 1 1 4
25 W 36 Vf 700 mA	2500 lm	0 4 8 - 2 7 1 0 :: 1 1 4



#### WALLWASHER (IP 20)

<b>INSET POWER</b>	<b>LUMINOUS FLUX</b>	<b>ORDER CODE</b>
25 W 36 Vf 700 mA	2290 lm	0 4 8 - 2 7 5 0 :: 1 1 4

#### WALLWASHER/FLOOR (IP 20)

<b>INSET POWER</b>	<b>LUMINOUS FLUX</b>	<b>ORDER CODE</b>
23.4 W 36 Vf 700 mA	2670 lm	0 4 8 - 2 7 5 0 :: 1 1 4

### Mounting accessories

**TRIMLESS MOUNTING SET** for plasterboard ceilings 12.5/15/25 mm

<b>COLOUR</b>	<b>ORDER CODE</b>
○ traffic white RAL9016	0 4 8 - 2 7 9 7 1 1 7

**MOUNTING SET WITH TRIM** for intermediate ceilings 2-25 mm

<b>TYPE</b>	<b>COLOUR</b>	<b>ORDER CODE</b>
1 lamp	● white aluminium RAL 9006	0 4 8 - 2 7 9 7 3 1 G
	○ traffic white RAL9016	0 4 8 - 2 7 9 7 3 1 7
	● jet black RAL 9005	0 4 8 - 2 7 9 7 3 1 8
2 lamps	● white aluminium RAL 9006	0 4 8 - 2 7 9 9 3 1 G
	○ traffic white RAL9016	0 4 8 - 2 7 9 9 3 1 7
	● jet black RAL 9005	0 4 8 - 2 7 9 9 3 1 8

#### CONCRETE MOUNTING HOUSING

<b>COLOUR</b>	<b>L-W-H (mm)</b>	<b>ORDER CODE</b>
primed concrete ceilings*	614-307-120	0 4 8 - 2 6 9 5 1 1 0

\*order mounting set separately, not applicable for 2 lamps mounting set with trim

### Electrical accessories

**POWER SUPPLY** 220-240 V AC, 50-60 Hz, □ PC II

<b>TYPE</b>	<b>EFFICIENCY</b>	<b>L-W-H (mm)</b>	<b>ORDER CODE</b>
500 mA   non DIM	η 88 %	143-43-30	0 0 2 - 9 0 7 7 7
500 mA   DALI-2	η 88 %	143-43-30	0 0 2 - 9 0 7 7 9
700 mA   non DIM	η 80 %	143-43-30	0 0 2 - 9 0 7 7 4
700 mA   DALI-2	η 88 %	143-43-30	0 0 2 - 9 0 7 7 6

#### THROUGH WIRING CONNECTION BOX

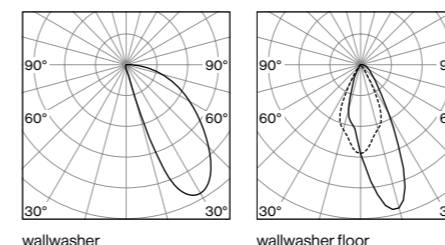
<b>TYPE</b>	<b>L-W-H (mm)</b>	<b>ORDER CODE</b>
non DIM cable ø 4-12 mm	105-58-30	0 0 5 - 2 5 3 1 1 1 0
DALI cable ø 4-12 mm	105-58-30	0 0 5 - 2 5 5 1 1 1 0

#### DIN RAIL COMPONENTS

<b>TYPE</b>	<b>W-H-D (mm)</b>	<b>ORDER CODE</b>
POWER SUPPLY 220-240 V AC 96 W   48 V DC constant voltage	90-90-60	0 0 5 - 6 5 2 0 2 1 0
LED DRIVER DALI-2 DT6 1-2 addr. 200-1050 mA settable const. current 2 × 42 W   48 V DC   U <sub>OUT</sub> 10-40 V	36-88-59	0 0 5 - 6 1 2 1 0 3 0

for more details and components see page 981

### Light distributions



**INSET POWER** is the current consumption excluding any ballast  
**LUMINOUS FLUX** value calculated for 3000 K, CRI ≥ 90, colour white, wide flood  
2700 K -5%, 4000 K +5%

**Zeitgeist** Graz, AT –  
by FIPE ARCHITECTURE





← back



## SASSO 60/100 round

semi-recessed

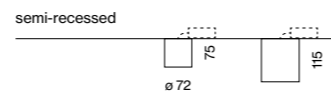
EN Cylindrical semi-recessed spotlight made of aluminium, available in 2 sizes; light inset lacquered; housing powder coated; luminaire housing can be attached to mounting plate without tools by interlock; choice of adj. sym. or asym. radiation characteristic; variants with sym. radiation characteristic: precise due to high quality lens system; variants with asym. radiation characteristic: high-quality reflector with micro-faceted, aluminum-vaporised surface; COB (Chip on Board) technology for maximum efficiency (ADJUSTABLE); no multiple shadows; efficient LEDs with very good colour rendering; external converter for ceiling insertion, for through-wiring suitable

DE Zylindrischer Halbeinbaustrahler aus Aluminium in 2 Größen; Leuchteinsatz lackiert; Gehäuse pulverbeschichtet; Leuchtenkörper mittels Verriegelung werkzeuglos auf Montageplatte aufsetzbar; wahlweise einstellbar sym. oder asym. Abstrahlcharakteristik; sym. strahlende Varianten: präzise durch hochwertige Linsensystem; asym. strahlende Varianten: hochwertiger Reflektor mit mikrofacettierter, aluminiumbedampfter Oberfläche; COB (Chip on Board) Technologie für höchste Effizienz (ADJUSTABLE); keine Mehrfachschatten; effiziente LEDs mit sehr guter Farbwiedergabe; externer Konverter für Deckeneinwurf, für Weiterverdrahtung geeignet

### Quickinfo

2700 K, 3000 K, 4000 K  
CRI ≥ 90, 2 SDCM  
SASSO 60 up to 104 lm/W  
SASSO 100 up to 117 lm/W  
L80 @ 50 000 h  
non DIM, DALI-2

### Types



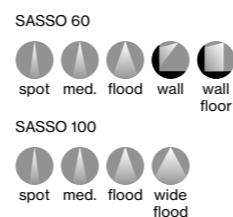
### Housing colours



### Inset colours



### Light distributions



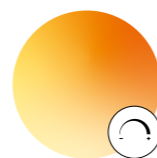
wallwasher and  
ww floor inset



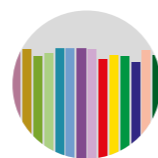
glare control  
(UGR ≤ 16)



easy mounting;  
no visible screws



CWD  
1800-3000 K



CRI ≥ 95  
2 SDCM

### Order options

COLOUR TEMPERATURE	
2700 K	4
3000 K	5
4000 K	6

HOUSING COLOUR	
○ traffic white RAL 9016	7
● jet black RAL 9005	1

INSET COLOUR	
○ traffic white RAL 9016 (UGR ≤ 22)	7
● matt silver (UGR ≤ 19)	4
● jet black RAL 9005 (UGR ≤ 16)	1
● gold dust RAL 260-M (UGR ≤ 19)	9

BEAM ANGLE SASSO 60	
spot 15°	S
medium 21°	M
flood 42°	F

BEAM ANGLE SASSO 100	
spot 19°	S
medium 34°	M
flood 45°	F
wide flood 65°	W

### Options on request

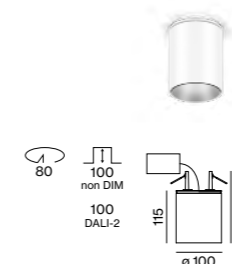
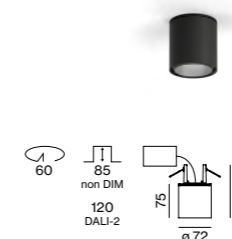
COLOUR RENDERING INDEX  
CRI ≥ 95, 2 SDCM

### COLOUR TEMPERATURE

CWD 1800-3000 K  
not for WW & WWF version

### CONTROL

Casambi



### SASSO 60 round semi-recessed



#### ADJUSTABLE

INSET POWER	LUMINOUS FLUX	ORDER CODE
10.7 W 36 Vf 300 mA	1040 lm	0 4 8 - 3 1 0 1 :: 1 ■ ■ ▲



#### WALLWASHER

INSET POWER	LUMINOUS FLUX	ORDER CODE
8.2 W 27 Vf 300 mA	635 lm	0 4 8 - 3 7 0 1 :: 1 ■ ■ ▲

#### WALLWASHER/FLOOR

INSET POWER	LUMINOUS FLUX	ORDER CODE
8.2 W 27 Vf 300 mA	633 lm	0 4 8 - 3 7 0 1 :: 1 ■ ■ ▲

### SASSO 100 round semi-recessed



#### ADJUSTABLE

INSET POWER	LUMINOUS FLUX	ORDER CODE
17.2 W 36 Vf 500 mA	1850 lm*	0 4 8 - 3 4 0 1 :: 1 ■ ■ ▲

\*reflector white flood

### Electrical accessories

POWER SUPPLY 220-240 V AC, 50-60 Hz, PC II

TYPE	EFFICIENCY	L-WH (mm)	ORDER CODE
300 mA   non DIM	η 85 %	85-40-22	0 0 2 - 9 0 7 7 1
300 mA   DALI-2	η 88 %	143-43-30	0 0 2 - 9 0 7 6 2
500 mA   non DIM	η 88 %	143-43-30	0 0 2 - 9 0 7 7 7
500 mA   DALI-2	η 88 %	143-43-30	0 0 2 - 9 0 7 7 9

THROUGH WIRING CONNECTION BOX for SASSO 100

TYPE	L-WH (mm)	ORDER CODE
non DIM cable ø 4-12 mm	105-58-30	0 0 5 - 2 5 3 1 1 1 0
DALI cable ø 4-12 mm	105-58-30	0 0 5 - 2 5 5 1 1 1 0

### DIN RAIL COMPONENTS

TYPE	WHD (mm)	ORDER CODE
POWER SUPPLY 220-240 V AC 96 W   48V DC constant voltage	90-90-60	0 0 5 - 6 5 2 0 2 1 0
LED DRIVER DALI-2 DT6 1-2 addr. 200-1050 mA settable const. current 2 × 42 W   48 V DC   U <sub>OUT</sub> 10-40 V	36-88-59	0 0 5 - 6 1 2 1 0 3 0

for more details and components see page 981

INSET POWER is the current consumption excluding any ballast  
LUMINOUS FLUX value calculated for 3000 K, CRI ≥ 90, colour white, flood 2700 K -5%, 4000 K +5%

[← back](#)


## SASSO 60/100 round

ceiling

**EN** Cylindrical ceiling mounted spotlight made of aluminium, available in 2 sizes; light inset lacquered; housing powder coated; luminaire housing can be attached to mounting plate without tools by interlock; adj. sym. or asym. radiation characteristic; variants with sym. radiation characteristic: precise due to high quality lens system; variants with asym. radiation characteristic: high-quality reflector with micro-faceted, aluminum-vaporised surface; COB (Chip on Board) technology for maximum efficiency (ADJUSTABLE); no multiple shadows; efficient LEDs with very good colour rendering; converter integrated into spotlight head

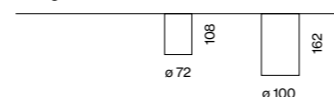
**DE** Zylindrischer Deckenanbaustrahler aus Aluminium in 2 Größen; Lichteinsatz lackiert; Gehäuse pulverbeschichtet; Leuchtenkörper mittels Verriegelung werkzeuglos auf Montageplatte aufsetzbar; einstellbar sym. oder asym. Abstrahlcharakteristik; sym. strahlende Varianten: präzise durch hochwertige Linsensystem; asym. strahlende Varianten: hochwertiger Reflektor mit mikrofacettierter, aluminiumbedampfter Oberfläche; COB (Chip on Board) Technologie für höchste Effizienz (ADJUSTABLE); keine Mehrfachschatten; effiziente LEDs mit sehr guter Farbwiedergabe; Konverter im Strahlerkopf integriert

### Quickinfo

2700 K, 3000 K, 4000 K  
CRI ≥ 90, 2 SDCM  
SASSO 60 up to 81lm/W  
SASSO 100 up to 100lm/W  
L80 @ 50 000 h  
non DIM, DALI-2

### Types

ceiling



### Housing colours



### Inset colours



### Light distributions

SASSO 60



SASSO 100



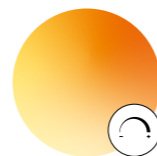
wallwasher and  
ww floor inset



glare control  
(UGR ≤ 16)



easy mounting;  
no visible screws



CWD  
1800–3000 K



CRI ≥ 95  
2 SDCM

### Order options

COLOUR TEMPERATURE	
2700 K	4
3000 K	5
4000 K	6

CONTROL	
non DIM	1
DALI-2	3

HOUSING COLOUR	
○ traffic white RAL 9016	7
● jet black RAL 9005	1

INSET COLOUR	
○ traffic white RAL 9016 (UGR ≤ 22)	7
● matt silver (UGR ≤ 19)	4
● jet black RAL 9005 (UGR ≤ 16)	1
● gold dust RAL 260-M (UGR ≤ 19)	9

BEAM ANGLE	
SASSO 60	
spot 15°	S
medium 21°	M
flood 42°	F

BEAM ANGLE	
SASSO 100	
spot 19°	S
medium 34°	M
flood 45°	F
wide flood 65°	W

### Options on request

COLOUR RENDERING INDEX  
CRI ≥ 95, 2 SDCM

COLOUR TEMPERATURE  
CWD 1800–3000 K  
not for WW & WWF version

LUMINOUS FLUX value calculated for  
CRI ≥ 90, colour white, reflector flood



### SASSO 60 round ceiling



#### ADJUSTABLE

SYSTEM POWER	COLOUR TEMP.	LUMINOUS FLUX	ORDER CODE
11.6 W	2700 K	808 lm	0 4 8 - 3 1 1 0 :: ▨ ▩ ▲
	3000 K	874 lm	
	4000 K	939 lm	



#### WALLWASHER

SYSTEM POWER	COLOUR TEMP.	LUMINOUS FLUX	ORDER CODE
11.4 W	2700 K	635 lm	0 4 8 - 3 7 1 0 :: ▨ ▩ ▲
	3000 K	635 lm	
	4000 K	744 lm	

#### WALLWASHER/FLOOR

SYSTEM POWER	COLOUR TEMP.	LUMINOUS FLUX	ORDER CODE
11.4 W	2700 K	633 lm	0 4 8 - 3 7 1 0 :: ▨ ▩ ▲
	3000 K	633 lm	
	4000 K	746 lm	

### SASSO 100 round ceiling



#### ADJUSTABLE

SYSTEM POWER	COLOUR TEMP.	LUMINOUS FLUX	ORDER CODE
20.2 W	2700 K	1650 lm	0 4 8 - 3 4 1 0 :: ▨ ▩ ▲
	3000 K	1790 lm	
	4000 K	1930 lm	

**Oppenländer Rechtsanwälte**  
Stuttgart, DE – by Ippolito Fleitz  
Group GmbH



**WIKUS Sägenfabrik** Spangenberg, DE –  
by Bieling Architekten AG with lighting  
design by Peter Andres Unabhängige  
Lichtplanung und -beratung GbR



**Private Residence**  
Copenhagen, DK –  
by COBE Architects with  
lighting design by anker & co



← back



## SASSO 60/100 square

semi-recessed

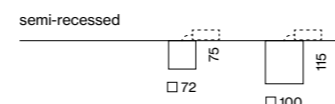
**EN** Square semi-recessed spotlight made of aluminium, available in 2 sizes; light inset lacquered; housing powder coated; luminaire housing can be attached to mounting plate without tools by interlock; choice of adjustable / fixed symmetric or asymmetric radiation characteristic; variants with sym. radiation characteristic: precise due to high quality lens system; variants with asym. radiation characteristic: high-quality reflector with micro-faceted, aluminum-vaporised surface; COB (Chip on Board) technology for maximum efficiency (ADJUSTABLE and DOWNLIGHT); no multiple shadows; efficient LEDs with very good colour rendering; external converter for ceiling insertion, for through-wiring suitable

**DE** Quadratischer Halbeinbaustrahler aus Aluminium in 2 Größen; Lichteinsatz lackiert; Gehäuse pulverbeschichtet; Leuchtenkörper mittels Verriegelung werkzeuglos auf Montageplatte aufsetzbar; wahlweise einstellbar / starr symmetrische oder asymmetrische Abstrahlcharakteristik; sym. strahlende Varianten: präzise durch hochwertige Linsenoptik; asym. strahlende Varianten: hochwertiger Reflektor mit mikrofacettierter, aluminiumbedampfter Oberfläche; COB (Chip on Board) Technologie für höchste Effizienz (ADJUSTABLE und DOWNLIGHT); keine Mehrfachschatten; effiziente LEDs mit sehr guter Farbwiedergabe; externer Konverter für Deckeneinwurf, für Weiterverdrahtung geeignet

### Quickinfo

2700 K, 3000 K, 4000 K  
CRI ≥ 90, 2 SDCM  
SASSO 60 up to 86 lm/W  
SASSO 100 up to 119 lm/W  
L80 @ 50 000 h  
non DIM, DALI-2

### Types



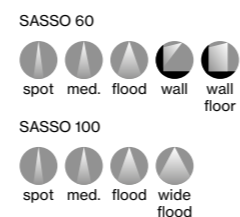
### Housing colours



### Inset colours



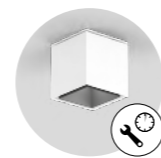
### Light distributions



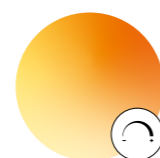
wallwasher and  
ww floor inset



glare control  
(UGR ≤ 16)



easy mounting;  
no visible screws



CWD  
1800–3000 K



CRI ≥ 95  
2 SDCM

### Order options

COLOUR TEMPERATURE	
2700 K	4
3000 K	5
4000 K	6

HOUSING COLOUR	
○ traffic white RAL 9016	7
● jet black RAL 9005	1

INSET COLOUR	
○ traffic white RAL 9016 (UGR ≤ 22)	7
● matt silver (UGR ≤ 19)	4
● jet black RAL 9005 (UGR ≤ 16)	1
● gold dust RAL 260-M (UGR ≤ 19)	9

BEAM ANGLE SASSO 60	
spot 15°	S
medium 21°	M
flood 42°	F

BEAM ANGLE SASSO 100	
spot 19°	S
medium 34°	M
flood 45°	F
wide flood 65°	W

### Options on request

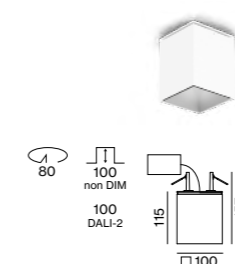
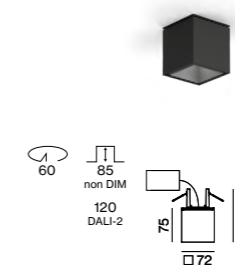
COLOUR RENDERING INDEX  
CRI ≥ 95, 2 SDCM

### COLOUR TEMPERATURE

CWD 1800–3000 K  
not for WW & WWF version

### CONTROL

Casambi



### SASSO 60 square semi-recessed



DOWNLIGHT	INSET POWER	LUMINOUS FLUX	ORDER CODE
	10.7 W 36 Vf 300 mA	1100 lm	0 4 8 - 3 0 0 1 :: 1 ■ ■ ▲



WALLWASHER	INSET POWER	LUMINOUS FLUX	ORDER CODE
	8.2 W 27 Vf 300 mA	635 lm	0 4 8 - 3 6 0 1 :: 1 ■ ■ ▲

### WALLWASHER/FLOOR

INSET POWER	LUMINOUS FLUX	ORDER CODE
8.2 W 27 Vf 300 mA	633 lm	0 4 8 - 3 6 0 1 :: 1 ■ ■ W

### SASSO 100 square semi-recessed



ADJUSTABLE	INSET POWER	LUMINOUS FLUX	ORDER CODE
	17.2 W 36 Vf 500 mA	1890 lm*	0 4 8 - 3 3 0 1 :: 1 ■ ■ ▲

\*reflector wide flood

### Electrical accessories

POWER SUPPLY 220-240 V AC 50-60 Hz, PC II

TYPE	EFFICIENCY	L-WH (mm)	ORDER CODE
300 mA   non DIM	η 85 %	85-40-22	0 0 2 - 9 0 7 7 1
300 mA   DALI-2	η 88 %	143-43-30	0 0 2 - 9 0 7 6 2
500 mA   non DIM	η 88 %	143-43-30	0 0 2 - 9 0 7 7 7
500 mA   DALI-2	η 88 %	143-43-30	0 0 2 - 9 0 7 7 9

THROUGH WIRING CONNECTION BOX for SASSO 100

TYPE	L-WH (mm)	ORDER CODE
non DIM cable ø 4–12 mm	105-58-30	0 0 5 - 2 5 3 1 1 1 0
DALI cable ø 4–12 mm	105-58-30	0 0 5 - 2 5 5 1 1 1 0

### DIN RAIL COMPONENTS

TYPE	W-H-D (mm)	ORDER CODE
POWER SUPPLY 220-240 V AC 96 W   48V DC constant voltage	90-90-60	0 0 5 - 6 5 2 0 2 1 0
LED DRIVER DALI-2 DT6 1–2 addr. 200–1050 mA settable const. current 2 × 42 W   48 V DC   U <sub>OUT</sub> 10–40 V	36-88-59	0 0 5 - 6 1 2 1 0 3 0

for more details and components see page 981

**INSET POWER** is the current consumption excluding any ballast  
**LUMINOUS FLUX** value calculated for 3000 K, CRI ≥ 90, colour white, flood 2700 K -5%, 4000 K +5%

[← back](#)


## SASSO 60/100 square

ceiling

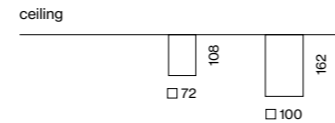
**EN** Square ceiling mounted spotlight made of aluminium, available in 2 sizes; light inset lacquered; housing powder coated; luminaire housing can be attached to mounting plate without tools by interlock; choice of adjustable / fixed symmetric or asymmetric radiation characteristic; variants with sym. radiation characteristic: precise due to high quality lens system; variants with asym. radiation characteristic: high-quality reflector with micro-faceted, aluminum-vaporised surface; COB (Chip on Board) technology for maximum efficiency (ADJUSTABLE and DOWNLIGHT); no multiple shadows; efficient LEDs with very good colour rendering; luminaire for through wiring; converter integrated into spotlight head

**DE** Quadratischer Deckenanbaustrahler aus Aluminium in 2 Größen; Lichteinsatz lackiert; Gehäuse pulverbeschichtet; Leuchtenkörper mittels Verriegelung werkzeuglos auf Montageplatte aufsetzbar; wahlweise einstellbar / starr symmetrische oder asymmetrische Abstrahlcharakteristik; sym. strahlende Varianten: präzise durch hochwertige Linsenoptik; asym. strahlende Varianten: hochwertiger Reflektor mit mikrofacetierter, aluminiumbedampfter Oberfläche; COB (Chip on Board) Technologie für höchste Effizienz (ADJUSTABLE und DOWNLIGHT); keine Mehrfachschatten; effiziente LEDs mit sehr guter Farbwiedergabe; Leuchte für Weiterverdrahtung; Konverter im Strahlerkopf integriert

### Quickinfo

2700 K, 3000 K, 4000 K  
CRI ≥ 90, 2 SDCM  
SASSO 60 up to 94lm/W  
SASSO 100 up to 101lm/W  
L80 @ 50 000 h  
non DIM, DALI-2

### Types



### Housing colours



### Inset colours



### Light distributions

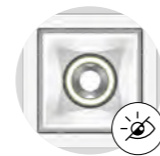
SASSO 60



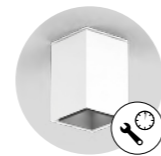
SASSO 100



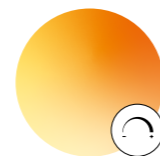
wallwasher and  
ww floor inset



glare control  
(UGR ≤ 16)



easy mounting;  
no visible screws



CWD  
1800-3000 K



CRI ≥ 95  
2 SDCM

### Order options

COLOUR TEMPERATURE	
2700 K	4
3000 K	5
4000 K	6

CONTROL	
non DIM	1
DALI-2	3

HOUSING COLOUR	
<input type="radio"/> traffic white RAL 9016	7
<input checked="" type="radio"/> jet black RAL 9005	1

INSET COLOUR	
<input type="radio"/> traffic white RAL 9016 (UGR ≤ 22)	7
<input type="radio"/> matt silver (UGR ≤ 19)	4
<input checked="" type="radio"/> jet black RAL 9005 (UGR ≤ 16)	1
<input type="radio"/> gold dust RAL 260-M (UGR ≤ 19)	9

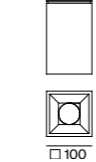
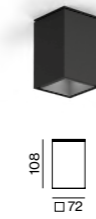
BEAM ANGLE	
SASSO 60	
spot 15°	S
medium 21°	M
flood 42°	F

BEAM ANGLE	
SASSO 100	
spot 19°	S
medium 34°	M
flood 45°	F
wide flood 65°	W

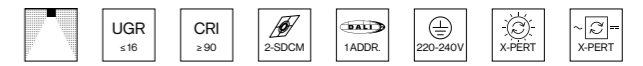
### Options on request

COLOUR RENDERING INDEX  
CRI ≥ 95, 2 SDCM

COLOUR TEMPERATURE  
CWD 1800-3000 K  
not for WW & WWF version



### SASSO 60 square ceiling



DOWNLIGHT				
SYSTEM POWER	COLOUR TEMP.	LUMINOUS FLUX	ORDER CODE	
11.6 W	2700 K	857 lm	0 4 8 - 3 0 1 0 ::	◆ ■ ▲
	3000 K	927 lm		
	4000 K	996 lm		



WALLWASHER				
SYSTEM POWER	COLOUR TEMP.	LUMINOUS FLUX	ORDER CODE	
11.4 W	2700 K	617 lm	0 4 8 - 3 6 1 0 ::	◆ ■ ▲ A
	3000 K	617 lm		
	4000 K	726 lm		

WALLWASHER/FLOOR				
SYSTEM POWER	COLOUR TEMP.	LUMINOUS FLUX	ORDER CODE	
11.4 W	2700 K	633 lm	0 4 8 - 3 6 1 0 ::	◆ ■ ▲ W
	3000 K	633 lm		
	4000 K	746 lm		

### SASSO 100 square ceiling



ADJUSTABLE				
SYSTEM POWER	COLOUR TEMP.	LUMINOUS FLUX	ORDER CODE	
20.2 W	2700 K	1700 lm	0 4 8 - 3 3 1 0 ::	◆ ■ ▲
	3000 K	1840 lm		
	4000 K	1980 lm		

LUMINOUS FLUX value calculated for  
CRI ≥ 90, colour white, reflector flood

**Relesys Office** Copenhagen, DK –  
by Lobo-Lab Architects  
with lighting design by anker & co







## SASSO 60/100 round

suspended

EN Cylindrical spotlight made of aluminium, available in 2 sizes; light inset lacquered; housing powder coated; pendant fitting with cable suspension; incl. feed (black or white); can be individually shortened; precise radiation characteristic due to high quality lens system; COB (Chip on Board) technology for maximum efficiency; no multiple shadows; efficient LEDs with very good colour rendering; canopy for through wiring; converter included in canopy

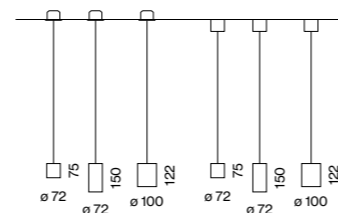
DE Zylindrischer Strahler aus Aluminium in 2 Größen; Lichteinsatz lackiert; Gehäuse pulverbeschichtet; abgependelt mit Seilabhängung; inkl. Einspeiseleitung (schwarz oder weiß); beliebig kürzbar; präzise Abstrahlcharakteristik durch hochwertige Linsenoptik; COB (Chip on Board) Technologie für höchste Effizienz; keine Mehrfachschatten; effiziente LEDs mit sehr guter Farbwiedergabe; Baldachin für Weiterverdrahtung; Konverter im Baldachin enthalten

### Quickinfo

2700 K, 3000 K, 4000 K  
CRI ≥ 90, 2 SDCM  
SASSO 60 up to 83 lm/W  
SASSO 100 up to 98 lm/W  
L80 @ 50 000 h  
non DIM, DALI-2

### Types

suspended



### Housing colours



### Inset colours



### Light distributions

SASSO 60



SASSO 100



glare control  
(UGR ≤ 16)



easy mounting;  
no visible screws



CRI ≥ 95  
2 SDCM

### Order options

#### HOUSING HEIGHT

75 mm	2
150 mm	7

#### COLOUR TEMPERATURE

2700 K	4
3000 K	5
4000 K	6

#### CONTROL

non DIM	1
DALI-2	3

#### HOUSING COLOUR

○ traffic white RAL 9016	7
● jet black RAL 9005	1

#### INSET COLOUR

○ traffic white RAL 9016 (UGR ≤ 22)	7
● matt silver (UGR ≤ 19)	4
● jet black RAL 9005 (UGR ≤ 16)	1
● gold dust RAL 260-M (UGR ≤ 19)	9

#### BEAM ANGLE

SASSO 60	▲
spot 15°	S
medium 21°	M
flood 42°	F

#### BEAM ANGLE

SASSO 100	▲
spot 19°	S
medium 34°	M
flood 45°	F
wide flood 65°	W

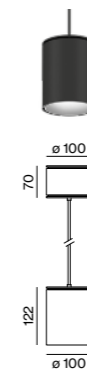
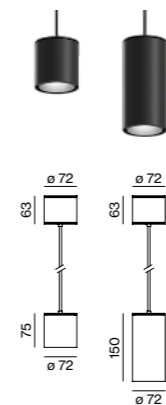
### Options on request

#### COLOUR RENDERING INDEX

CRI ≥ 95, 2 SDCM

#### MOUNTING

recessed canopy



### SASSO 60 round suspended



#### DOWNLIGHT

SYSTEM POWER	COLOUR TEMP.	LUMINOUS FLUX	ORDER CODE
11.6 W	2700 K	833 lm	0 4 8 - 3 1 L 0 :: ◆ ◆ ◆ ▲
	3000 K	901 lm	
	4000 K	968 lm	

### SASSO 100 round suspended



#### DOWNLIGHT

SYSTEM POWER	COLOUR TEMP.	LUMINOUS FLUX	ORDER CODE
20.2 W	2700 K	1650 lm	0 4 8 - 3 4 2 0 :: ◆ ◆ ◆ ▲
	3000 K	1790 lm	
	4000 K	1920 lm	

LUMINOUS FLUX value calculated for  
CRI ≥ 90, colour white, reflector wide flood

**James Good Coiffeur Lounge**  
Flums, CH – by Daniel Huber Architektur GmbH



← back



## SASSO 60 base

ceiling

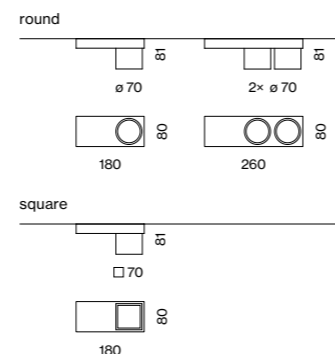
**EN** Cylindrical or square spotlight made of aluminium; light inset lacquered; housing powder coated; light inset rotatable and tiltable (cylindrical versions); choice of single lamp or double lamps (cylindrical versions); surface mounted housing in aluminium incl. converter; mounting plate with pre-assembled converter unit can be pre-mounted; luminaire housing can be attached without tools by interlock; precise radiation characteristic due to high quality lens system; COB (Chip on Board) technology for maximum efficiency; no multiple shadows; efficient LEDs with very good colour rendering; luminaire for through wiring

**DE** Zylindrischer bzw. quadratischer Strahler aus Aluminium; Lichteinsatz lackiert; Gehäuse pulverbeschichtet; Lichteinsatz dreh- und schwenkbar (zylindr. Varianten); wahlweise einflammig oder zweiflammig (zylindr. Varianten); Anbaugehäuse aus Aluminium inkl. Konverter; Montageplatte mit vormontierter Konvertereinheit vorab montierbar; Leuchtenkörper mittels Verriegelung werkzeuglos aufsetzbar; präzise Abstrahlcharakteristik durch hochwertige Linsenoptik; COB (Chip on Board) Technologie für höchste Effizienz; keine Mehrfachschatten; effiziente LEDs mit sehr guter Farbwiedergabe; Leuchte für Weiterverdrahtung

### Quickinfo

2700 K, 3000 K, 4000 K  
CRI ≥ 90, 2 SDCM  
SASSO round up to 90 lm/W  
SASSO square up to 86 lm/W  
L80 @ 50 000 h  
non DIM, DALI-2

### Types



### Housing colours



### Inset colours



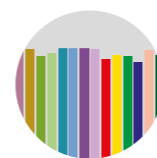
### Light distributions



glare control  
(UGR ≤ 16)



easy mounting;  
no visible screws



CRI ≥ 95  
2 SDCM

### Order options

COLOUR TEMPERATURE	
2700 K	4
3000 K	5
4000 K	6

CONTROL	
non DIM	1
DALI-2	3

HOUSING COLOUR	
○ traffic white RAL 9016	7
● jet black RAL 9005	1

INSET COLOUR	
○ traffic white RAL 9016 (UGR ≤ 22)	7
● matt silver (UGR ≤ 19)	4
● jet black RAL 9005 (UGR ≤ 16)	1
● gold dust RAL 260-M (UGR ≤ 19)	9

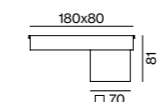
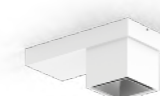
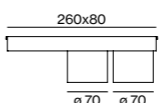
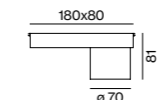
BEAM ANGLE	
spot 15°	S
medium 21°	M
flood 42°	F

### Options on request

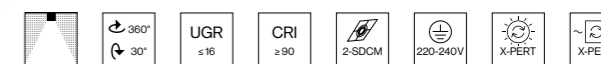
COLOUR RENDERING INDEX	
CRI ≥ 95, 2 SDCM	

LIGHT DISTRIBUTION	
wallwasher	
wallwasher / floor	

LUMINOUS FLUX value calculated for  
CRI ≥ 90, colour white, reflector flood



### SASSO 60 base round



#### ADJUSTABLE 1 LAMP

SYSTEM POWER	COLOUR TEMP.	LUMINOUS FLUX	ORDER CODE
11.7 W	2700 K	816 lm	0 4 8 - 3 1 3 0 :: ◆ ▣ ▣ ▲
	3000 K	882 lm	
	4000 K	948 lm	

#### ADJUSTABLE 2 LAMPS

SYSTEM POWER	COLOUR TEMP.	LUMINOUS FLUX	ORDER CODE
21.6 W	2700 K	2 × 873 lm	0 4 8 - 3 1 4 0 :: ◆ ▣ ▣ ▲
	3000 K	2 × 921 lm	
	4000 K	2 × 977 lm	

### SASSO 60 base square



#### DOWNLIGHT 1 LAMP

SYSTEM POWER	COLOUR TEMP.	LUMINOUS FLUX	ORDER CODE
11.7 W	2700 K	865 lm	0 4 8 - 3 0 3 0 :: ◆ ▣ ▣ ▲
	3000 K	936 lm	
	4000 K	1010 lm	



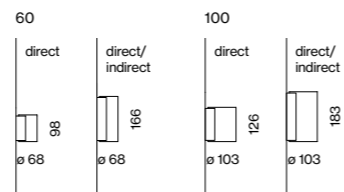
**The Raum** Bolzano, IT –  
by bergundtal gmbh.



### Quickinfo

2700 K, 3000 K, 4000 K  
 CRI ≥ 90, 2 SDCM  
 SASSO 60 up to 69 lm/W  
 SASSO 100 up to 61 lm/W  
 L80 @ 50 000 h  
 non DIM, DALI-2

### Types



### Housing colours



### Inset colours



### Light distributions



direct indirect

### Order options

COLOUR TEMPERATURE	
2700 K	4
3000 K	5
4000 K	6

CONTROL	
non DIM	1
DALI-2	3

HOUSING COLOUR	
○ traffic white RAL 9016	7
● jet black RAL 9005	1

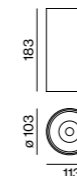
INSET COLOUR	
○ traffic white RAL 9016 (UGR ≤ 22)	7
● matt silver (UGR ≤ 19)	4
● jet black RAL 9005 (UGR ≤ 16)	1
● gold dust RAL 260-M (UGR ≤ 19)	9

### BEAM ANGLE

opal lens

### Options on request

COLOUR RENDERING INDEX  
 CRI ≥ 95, 2 SDCM



### SASSO 60 round wall



#### DIRECT

SYSTEM POWER	COLOUR TEMP.	LUMINOUS FLUX	ORDER CODE
11.7 W	2700 K	647 lm	0 4 8 - 3 1 5 0 :: ◆ ▣ ■ ○
	3000 K	683 lm	
	4000 K	724 lm	

#### DIRECT / INDIRECT

SYSTEM POWER	COLOUR TEMP.	LUMINOUS FLUX	ORDER CODE
20.4 W	2700 K	2 × 643 lm	0 4 8 - 3 1 6 0 :: ◆ ▣ ■ ○
	3000 K	2 × 678 lm	
	4000 K	2 × 720 lm	

### SASSO 100 round wall



#### DIRECT

SYSTEM POWER	COLOUR TEMP.	LUMINOUS FLUX	ORDER CODE
20.4 W	2700 K	1130 lm	0 4 8 - 3 4 5 0 :: ◆ ▣ ■ ○
	3000 K	1180 lm	
	4000 K	1240 lm	

#### DIRECT / INDIRECT

SYSTEM POWER	COLOUR TEMP.	LUMINOUS FLUX	ORDER CODE
41 W	2700 K	2 × 1130 lm	0 4 8 - 3 4 6 0 :: ◆ ▣ ■ ○
	3000 K	2 × 1180 lm	
	4000 K	2 × 1240 lm	

## SASSO 60/100 round

wall

EN Cylindrical wall surface mounted luminaire made of aluminium, available in 2 sizes; light inset lacquered; housing powder coated; optionally symmetric direct or direct / indirect light distribution; homogeneous wall or ceiling illumination through uniform light distribution; precise radiation characteristic due to high quality lens system; installation of variant DIRECT optionally for floor or ceiling illumination; COB (Chip on Board) technology for maximum efficiency; no multiple shadows; efficient LEDs with very good colour rendering

DE Zylindrische Wandanbauleuchte aus Aluminium in 2 Größen; Lichteinsatz lackiert; Gehäuse pulverbeschichtet; wahlweise symmetrisch direkte oder direkt/indirekte Abstrahlcharakteristik; homogene Wand- bzw. Deckenaufhellung durch gleichmäßige Lichtverteilung; präzise Abstrahlcharakteristik durch hochwertige Linsenoptik; Montage Variante DIRECT wahlweise zur Boden- oder Deckenaufhellung; COB (Chip on Board) Technologie für höchste Effizienz; keine Mehrfachschatten; effiziente LEDs mit sehr guter Farbwiedergabe



direct and direct / indirect illumination



high quality lens



easy mounting



CRI ≥ 95  
2 SDCM

LUMINOUS FLUX value calculated for  
 CRI ≥ 90, colour white, lens opal

**MAM Competence Center**  
Großhöflein, AT –  
by INNOCAD Architektur ZT



# The exquisite choice



## SASSO PRO

**EN** The high-quality reflector ensures a particularly even light pattern and professional glare control. Its exclusive design and high-quality appearance make SASSO the ideal spotlight on the shop floor. The spotlights can be rotated through 360° and can also be swivelled by up to 35° around the horizontal central axis. This means light can be flexibly redirected even after installation, depending on the shop concept. Thanks to its replaceable light insets, the spotlight can be installed quickly and without any tools using a ball-catch system. SASSO is available in various sizes, colours, and with optical accessories. For the light colours, you can choose between 2700K, 3000K, 4000K, or the dynamic gradient Colour Warm Dimming and Tunable White versions.

**DE** Der hochwertige Reflektor sorgt für ein besonders gleichmäßiges Lichtbild und professionelle Entblendung. Sein exklusives Design und hochwertiges Erscheinungsbild machen SASSO zum idealen Strahler im Shopbereich. Die Spots können um 360° gedreht werden und sind zusätzlich um bis zu 35° um die horizontale Mittelachse schwenkbar. Dadurch kann Licht auch nach der Installation flexibel gelenkt werden – je nach Shop-Konzept. Durch seine tauschbaren Lichteinsätze kann der Spot schnell und werkzeuglos mittels Kugelschnappsystem eingebaut werden. SASSO ist in verschiedenen Größen, Farben und mit optischen Zubehör erhältlich. Bei den Lichtfarben haben Sie die Auswahl zwischen 2700K, 3000K, 4000K oder den dynamischen Verlaufsvarianten Colour Warm Dimming und Tunable White.

### Types



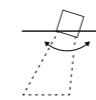
80

100

### Mountings

trimless  
recessedwith trim  
recessed

### Light distribution



spotlight



## Precise light adjustment

**EN** In addition to the 360° rotatability of all SASSO Round 80/100 variants, the adjustable version can be swivelled up to 35° around the horizontal central axis. This enables light to be directed precisely where it is needed.

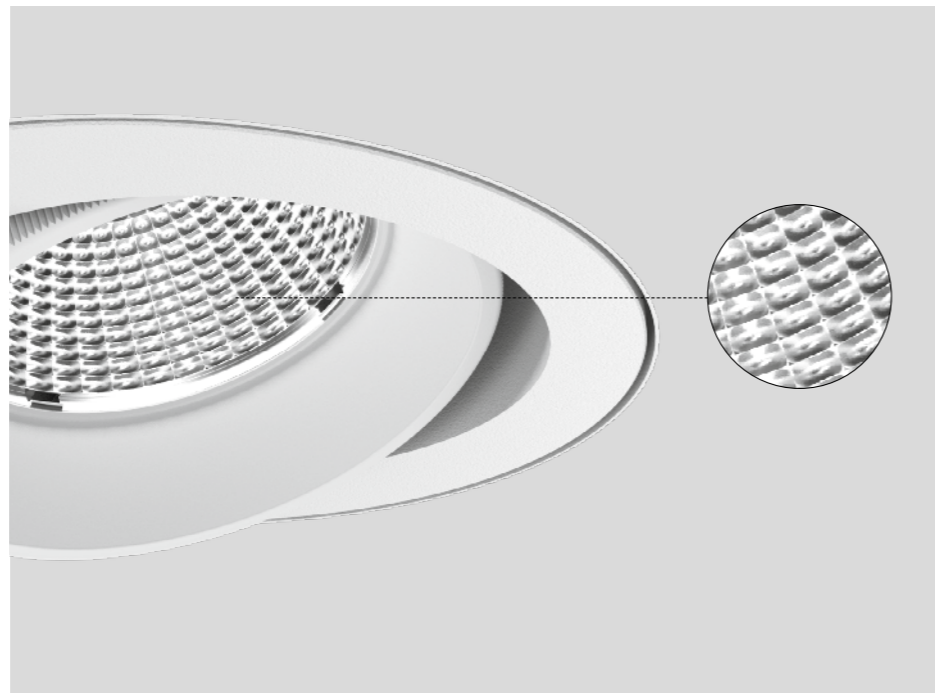
**DE** Zusätzlich zur 360°-Drehbarkeit aller SASSO Round 80/100 Varianten kann die Adjustable-Ausführung bis zu 35° um die horizontale Mittelachse geschwenkt werden. Das ermöglicht eine noch exaktere Lenkung des Lichts dorthin, wo es gebraucht wird.



## Reflector inset

**EN** The high-quality reflector with spherical faceted optics ensures a uniform light pattern with significant glare control. SASSO is an attractive lighting solution in the premium shop area, thanks to its high-quality appearance.

**DE** Der hochwertige Reflektor mit sphärischer Facettenoptik sorgt für ein gleichmäßiges Lichtbild bei zusätzlich guter Entblendung. Dank seines hochwertigen Erscheinungsbildes ist SASSO auch eine attraktive Lichtlösung im Premium-Shopbereich.



## Optical accessories

**EN** Use a wide range of optical accessories to adapt spotlights for special applications. The optical light accessories can be attached or removed in one easy step and provide glare-free light at any point.

**DE** Nutzen Sie vielfältiges optisches Zubehör, um Strahler für spezielle Anwendungsbereiche anzupassen. Die optischen Licht-Accessoires lassen sich mit nur einem Handgriff aufsetzen oder abnehmen und sorgen an jeder Stelle für blendfreies Licht.

## CWD – Colour Warm Dimming

**EN** Warm light quality with reduced illuminance. Colour Warm Dimming reduces the light intensity while continuously changing the colour temperature between 3000 K and 1800 K. The function supports, for example, the change between cosy restaurant lighting during the day and a relaxing lighting mood in the evening.

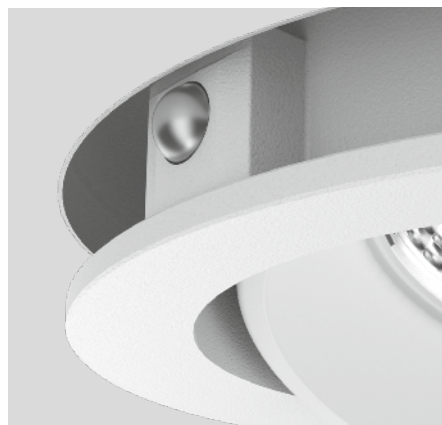
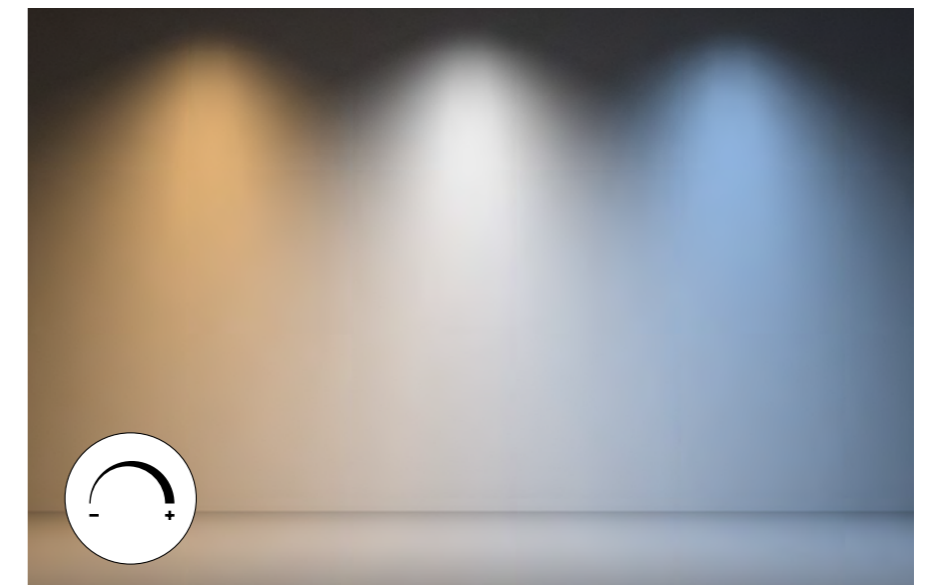
**DE** Warme Lichtqualität bei reduzierter Beleuchtungsstärke: Colour Warm Dimming senkt zugleich die Lichtintensität und wechselt die Farbtemperatur stufenlos zwischen 3000 K und 1800 K. Die Funktion unterstützt etwa den Wechsel zwischen gemütlicher Restaurant-Beleuchtung tagsüber und einer entspannenden Lichtstimmung am Abend.



## TW – Tunable White

**EN** Changes in the colour of light have a substantial effect on our mood. Tunable White allows the colour temperature to be continuously adjusted from 2700 K (warm light) to 6500 K (cool light) to dynamically adapt the lighting to the time of day or ambient brightness.

**DE** Veränderungen in der Lichtfarbe haben eine starke Wirkung auf unsere Stimmung. Tunable White ermöglicht die stufenlose Verschiebung der Farbtemperatur von 2700 K (warmes Licht) bis 6500 K (kühles Licht), um die Beleuchtung dynamisch an Uhrzeit oder Umgebungslicht anzupassen.



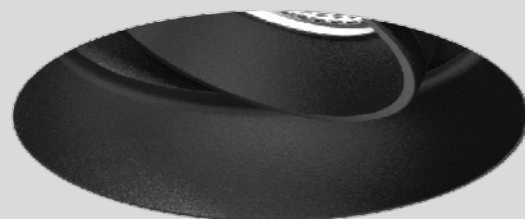
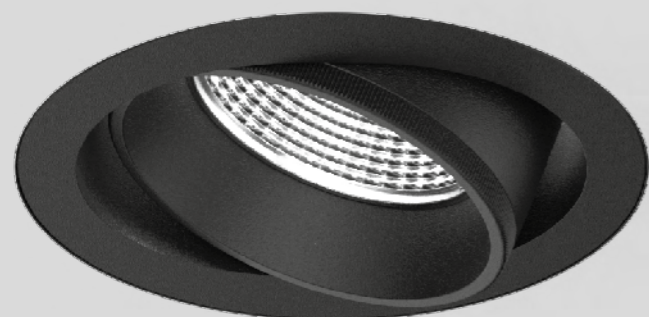
## Ball catch system

**EN** SASSO spots are easy to replace. The assembly is quick and entirely without tools, thanks to a ball catch system. The lighting thus always adapts flexibly to new requirements and circumstances.

**DE** SASSO Spots sind einfach austauschbar: Die Montage erfolgt schnell und völlig ohne Werkzeug durch ein Kugelschnappsystem. So passt sich die Beleuchtung stets flexibel den neuen Anforderungen und Gegebenheiten an.



← back



## SASSO PRO 80 flush/offset

recessed

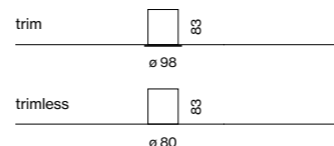
EN Round recessed spotlight in die-cast aluminium; installation without tools in mounting set with ball catch system; surface powder coated; installation possible in different housings; light inset rotatable and tiltable; optionally with recessed lighting level; optical attachments as accessories; with optional high-quality lens system with precise radiation characteristic; and high-quality reflector with spherical facet effect design, precise radiation characteristics with different beam angles; installed and exchanged without tools; COB (Chip on Board) technology or high power LEDs for maximum efficiency; no multiple shadows; efficient LEDs with very good colour rendering

DE Runder Einbaustrahler aus Aluminiumdruckguss; werkzeuglose Montage im Montageset durch Kugelschnappsystem; Oberfläche pulverbeschichtet; Einbau in unterschiedlichen Gehäusen möglich; Licht-einsatz dreh- und schwenkbar; optional mit zurückversetzter Leuchtenebene; optische Aufsätze als Zubehör; wahlweise mit hochwertiger Linsenoptik mit präziser Abstrahlcharakteristik; bzw. hochwertiger Reflektor mit sphärischer Facettenoptik, präzise Abstrahlcharakteristik mit verschiedenen Ausstrahlwinkeln; werkzeuglos einsetz- bzw. austauschbar; mit COB (Chip on Board) Technologie bzw. High-Power-LEDs für höchste Effizienz; keine Mehrfachschatten; effiziente LEDs mit sehr guter Farbwiedergabe

### Quickinfo

2700 K, 3000 K, 4000 K, CWD  
 CRI ≥ 90, 3 SDCM  
 up to 93 lm/W  
 L90 @ 50 000 h  
 non DIM, DALI-2

### Types



### Colours



### Light distributions



### Order options

COLOUR TEMPERATURE	
2700 K	4
3000 K	5
4000 K	6
CWD 1800–2700 K	

CONTROL	
non DIM	1
DALI-2	3

MATERIAL COLOUR	
○ traffic white RAL 9016	7
● jet black RAL 9005	8

LENS	
super spot 6°	

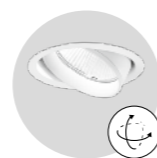
BEAM ANGLE	
medium 27°	M
flood 37°	F

### Options on request

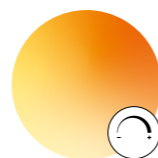
MOUNTING SET	
acoustic soft ceilings	



DiiA® standards  
 251, 252, 253



rotatable 360°  
 tiltable 35°



CWD  
 1800–2700 K



### SASSO PRO 80



#### SPOTLIGHT ADJUSTABLE

SYSTEM POWER	COLOUR TEMP.	LUMINOUS FLUX	ORDER CODE
7.7 W	2700 K	353 lm	048-2310::1 V
super spot 6°	3000 K	379 lm	
	4000 K	408 lm	
8.3 W	2700 K	728 lm	048-2310::1 V A
	3000 K	765 lm	
	4000 K	773 lm	
12.2 W	2700 K	1020 lm	048-2312:: V A
	3000 K	1060 lm	
	4000 K	1130 lm	

SYSTEM POWER	LUMINOUS FLUX	ORDER CODE
6.5 W CWD 1800–2700 K	378 lm	048-2310E3 V M

### Mounting accessories

#### TRIMLESS MOUNTING SET

for installation in plasterboard ceilings 12.5/15/25 mm

TYPE	ORDER CODE
flush	052-1921327
offset 17 mm	052-193132 V

#### ROUND MOUNTING SET WITH TRIM

for intermediate ceilings 5–25 mm

TYPE	ORDER CODE
flush	052-192232 V
offset 17 mm	052-193232 V

#### SQUARE MOUNTING SET WITH TRIM

for intermediate ceilings 5–25 mm

TYPE	ORDER CODE
flush	052-194231 V
offset 17 mm	052-195231 V

#### CONCRETE MOUNTING HOUSING

TYPE	L-W-H (mm)	ORDER CODE
exposed concrete ceilings*	229-227-160	060-00080
primed concrete ceilings**	$\varnothing 240-400-130$	052-1914320

\*only for flush mounting \*\*order mounting set separately

### Optical accessories

TYPE	ORDER CODE
honeycomb louver	048-209131 V
linear prismatic lens	048-209231 V
snoot	048-209111 V
snoot with honeycomb louver	048-209121 V

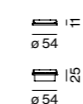
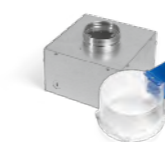
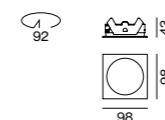
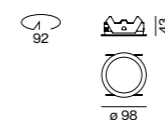
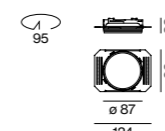
use only 1 optical accessory

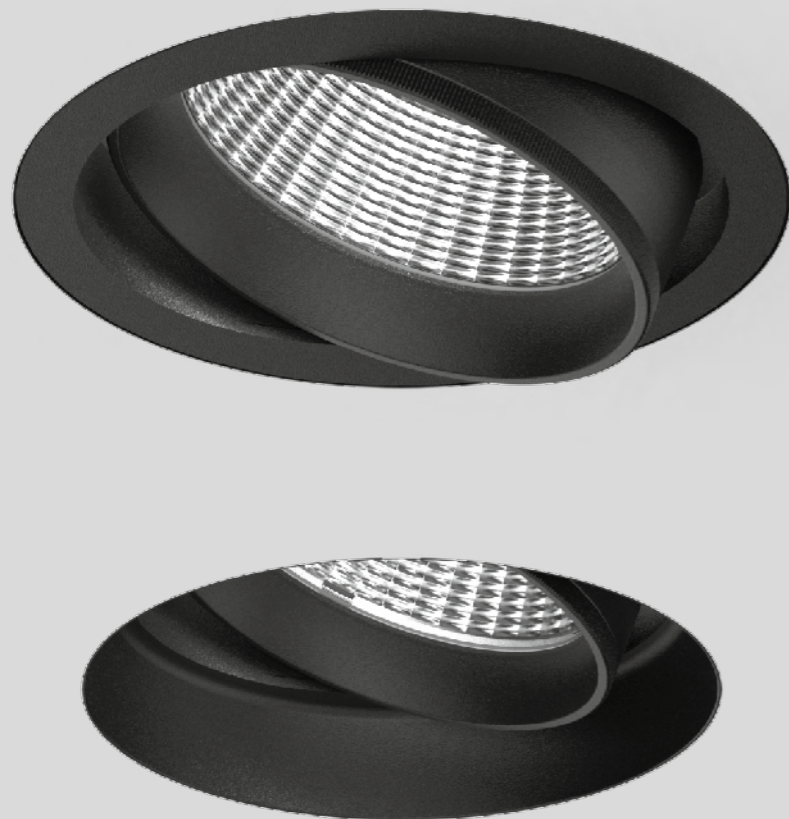
### Electrical accessories

#### THROUGH WIRING CONNECTION BOX

TYPE	L-W-H (mm)	ORDER CODE
non DIM cable $\varnothing 4-12$ mm	105-58-30	005-2531110
DALI cable $\varnothing 4-12$ mm	105-58-30	005-2551110

LUMINOUS FLUX value calculated for CRI ≥ 90, colour white, reflector flood, flush mounting



[← back](#)


## SASSO PRO 100 flush/offset

recessed

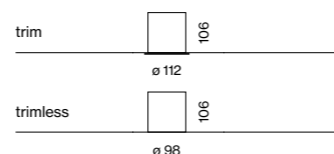
EN Round recessed spotlight in die-cast aluminium; installation without tools in mounting set with ball catch system; surface powder coated; installation possible in different housings; light inset rotatable and tiltable; optionally with recessed lighting level; optical attachments as accessories; high-quality reflector with spherical facet effect design, precise radiation characteristics with different beam angles; installed and exchanged without tools; COB (Chip on Board) technology for maximum efficiency; no multiple shadows; efficient LEDs with very good colour rendering

DE Runder Einbaustrahler aus Aluminiumdruckguss; werkzeuglose Montage im Montageset durch Kugelschnappsystem; Oberfläche pulverbeschichtet; Einbau in unterschiedlichen Gehäusen möglich; Licht-einsatz dreh- und schwenkbar; optional mit zurückversetzter Leuchtenebene; optische Aufsätze als Zubehör; hochwertiger Reflektor mit sphärischer Facettenoptik, präzise Abstrahlcharakteristik mit verschiedenen Ausstrahlwinkeln; werkzeuglos einsetz- bzw. austauschbar; COB (Chip on Board) Technologie für höchste Effizienz; keine Bildung von Mehrfachschatten; effiziente LEDs mit sehr guter Farbwiedergabe

### Quickinfo

2700 K, 3000 K, 4000 K, CWD, TW  
CRI ≥ 90, 3 SDCM  
up to 104 lm/W  
L80 @ 50 000 h  
non DIM, DALI-2

### Types



### Colours



### Light distributions



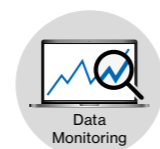
### Order options

COLOUR TEMPERATURE	
2700 K	4
3000 K	5
4000 K	6
CWD 2000–3000 K	
TW 1800–3000 K	
TW 2700–6500 K	

CONTROL	
non DIM	1
DALI-2	3

MATERIAL COLOUR	
○ traffic white RAL 9016	7
● jet black RAL 9005	8

REFLECTOR	
spot 18° (not for HO version)	S
medium 24°	M
flood 36°	F
wide flood 55° (not for HO vers.)	W



DiiA® standards  
251, 252, 253



rotatable 360°  
tiltable 35°

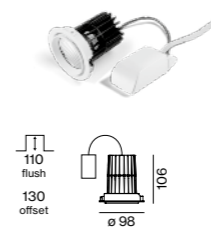


CWD  
2000–3000 K



TW 1800–3000 K &  
2700–6500 K

LUMINOUS FLUX value calculated for  
CRI ≥ 90, colour white, reflector flood,  
flush mounting



### SASSO PRO 100



#### SPOTLIGHT ADJUSTABLE

SYSTEM POWER	COLOUR TEMP.	LUMINOUS FLUX	ORDER CODE
14.5 W	2700 K	1350 lm	0 4 8 - 2 4 1 0 :: ▢ ▢ ▢
	3000 K	1420 lm	
	4000 K	1490 lm	
26.5 W	2700 K	2160 lm	0 4 8 - 2 4 1 2 :: ▢ ▢ ▢
	3000 K	2260 lm	
	4000 K	2380 lm	
27 W HO	2700 K	2580 lm	0 4 8 - 2 4 1 3 :: ▢ ▢ ▢
	3000 K	2810 lm	
	4000 K	2840 lm	

SYSTEM POWER	LUMINOUS FLUX	ORDER CODE
14.7 W CWD 2000–3000 K	1030 lm	0 4 8 - 2 4 1 1 E 3 ▢ ▢ F
28.2 W TW 1800–3000 K	2020 lm	0 4 8 - 2 4 1 2 L 3 ▢ ▢ F
28.2 W TW 2700–6500 K	2170 lm	0 4 8 - 2 4 1 2 D 3 ▢ ▢ F

### Mounting accessories

#### TRIMLESS MOUNTING SET

for installation in plasterboard ceilings 12.5/15/25 mm

TYPE	ORDER CODE
flush	0 5 2 - 1 9 2 1 4 4 7
offset 17 mm	0 5 2 - 1 9 3 1 4 4 ▢

#### ROUND MOUNTING SET WITH TRIM

for intermediate ceilings 5–25 mm

TYPE	ORDER CODE
flush	0 5 2 - 1 9 2 2 4 4 ▢
offset 17 mm	0 5 2 - 1 9 3 2 4 4 ▢

#### SQUARE MOUNTING SET WITH TRIM

for intermediate ceilings 5–25 mm

TYPE	ORDER CODE
flush	0 5 2 - 1 9 4 2 4 1 ▢
offset 17 mm	0 5 2 - 1 9 5 2 4 1 ▢

#### CONCRETE MOUNTING HOUSING

for &lt;15 W version

TYPE	L-W-H (mm)	ORDER CODE
exposed concrete ceilings*	229-227-160	0 5 2 - 1 9 1 3 4 1 0
primed concrete ceilings**	ø240-400-130	0 5 2 - 1 9 1 4 4 2 0

\*only for flush mounting \*\*order mounting set separately

### Optical accessories

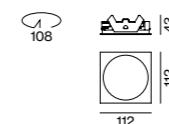
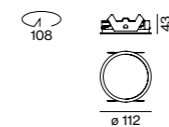
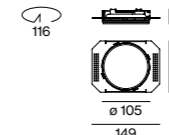
TYPE	ORDER CODE
honeycomb louver	0 4 8 - 2 1 9 1 3 1 ▢
linear prismatic lens	0 4 8 - 2 1 9 2 3 1 ▢
snoot	0 4 8 - 2 1 9 1 1 1 ▢
snoot with honeycomb louver	0 4 8 - 2 1 9 1 2 1 ▢

use only 1 optical accessory

### Electrical accessories

#### THROUGH WIRING CONNECTION BOX

TYPE	L-W-H (mm)	ORDER CODE
non DIM cable ø 4–12 mm	105-58-30	0 0 5 - 2 5 3 1 1 1 0
DALI cable ø 4–12 mm	105-58-30	0 0 5 - 2 5 5 1 1 1 0



**Oberpollinger | The KaDeWe Group**  
Munich, DE – by Licht Kunst Licht AG  
including lighting design



**Oberpollinger | The KaDeWe Group**  
Munich, DE – by Licht Kunst Licht AG  
including lighting design

